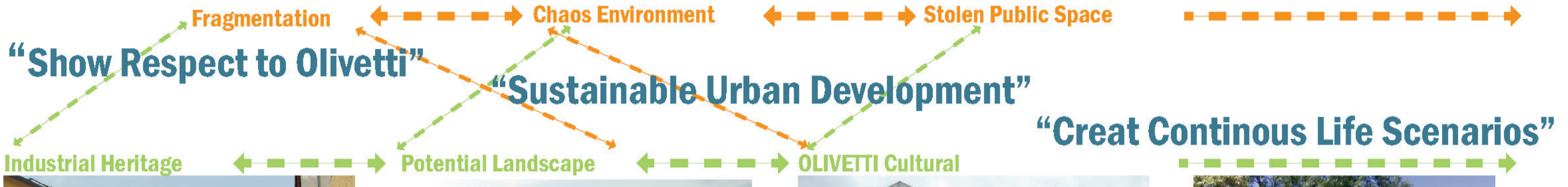
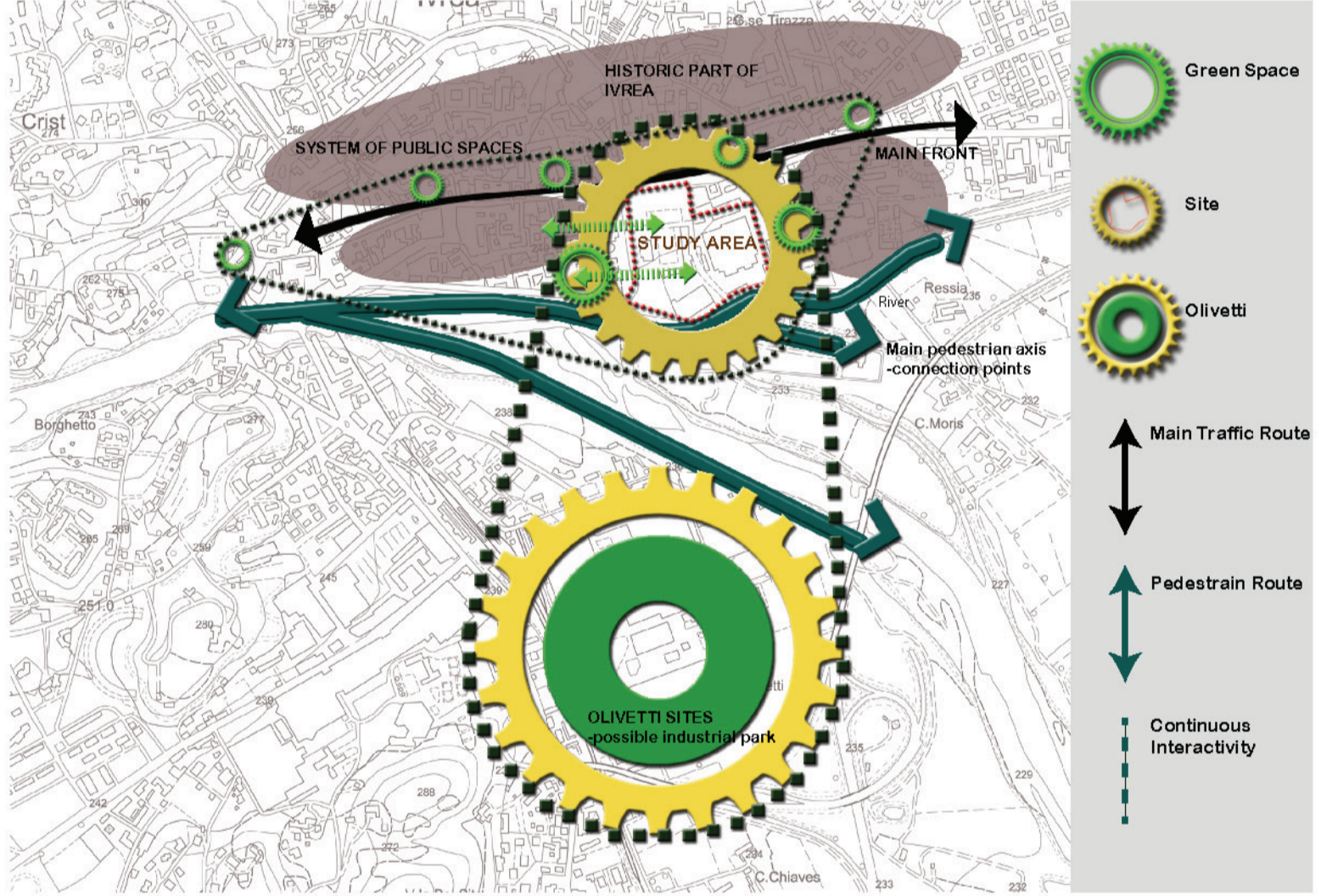
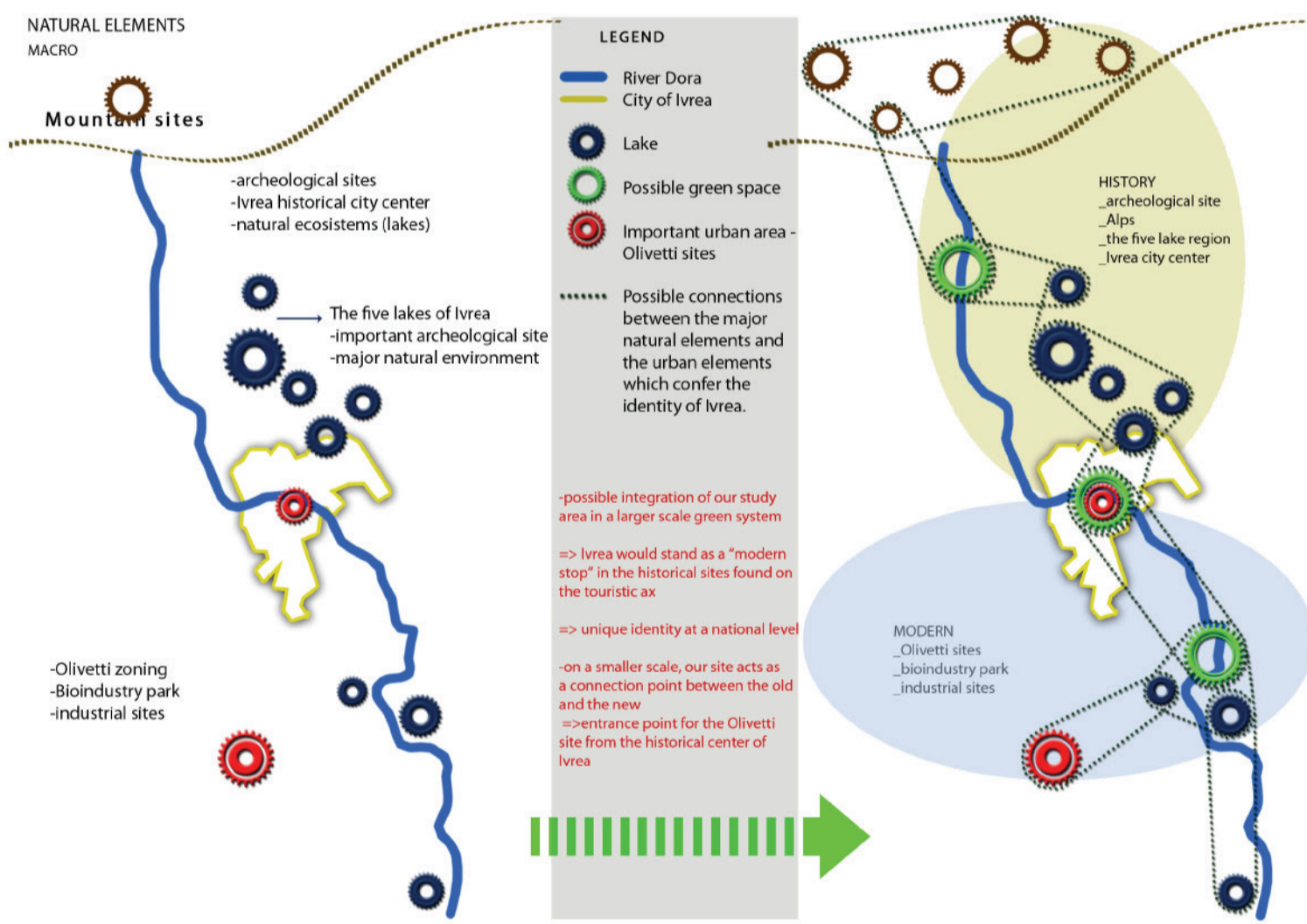


# Stitching Ivrea

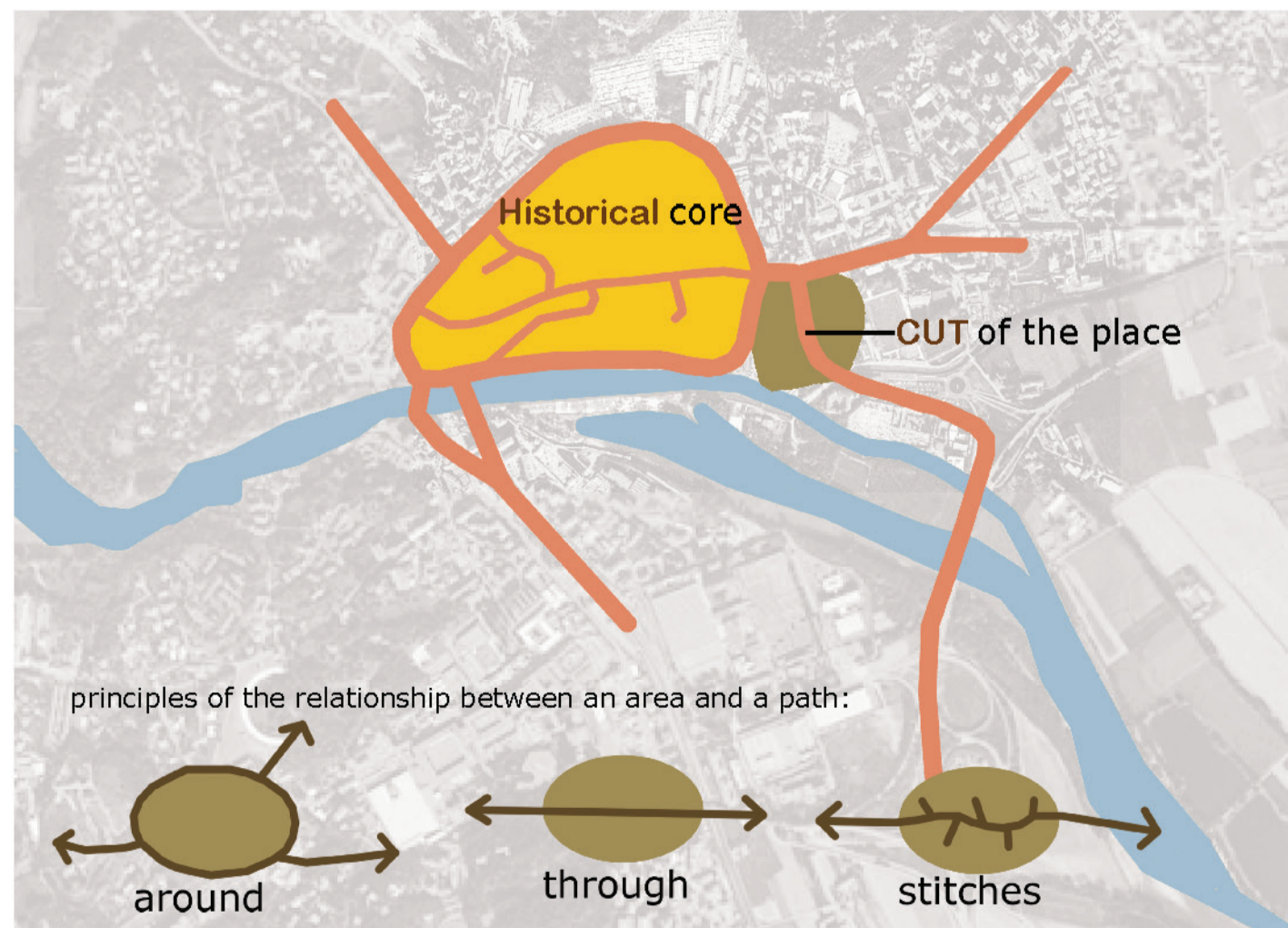
## Problems and Values



## Concepts and Approaches

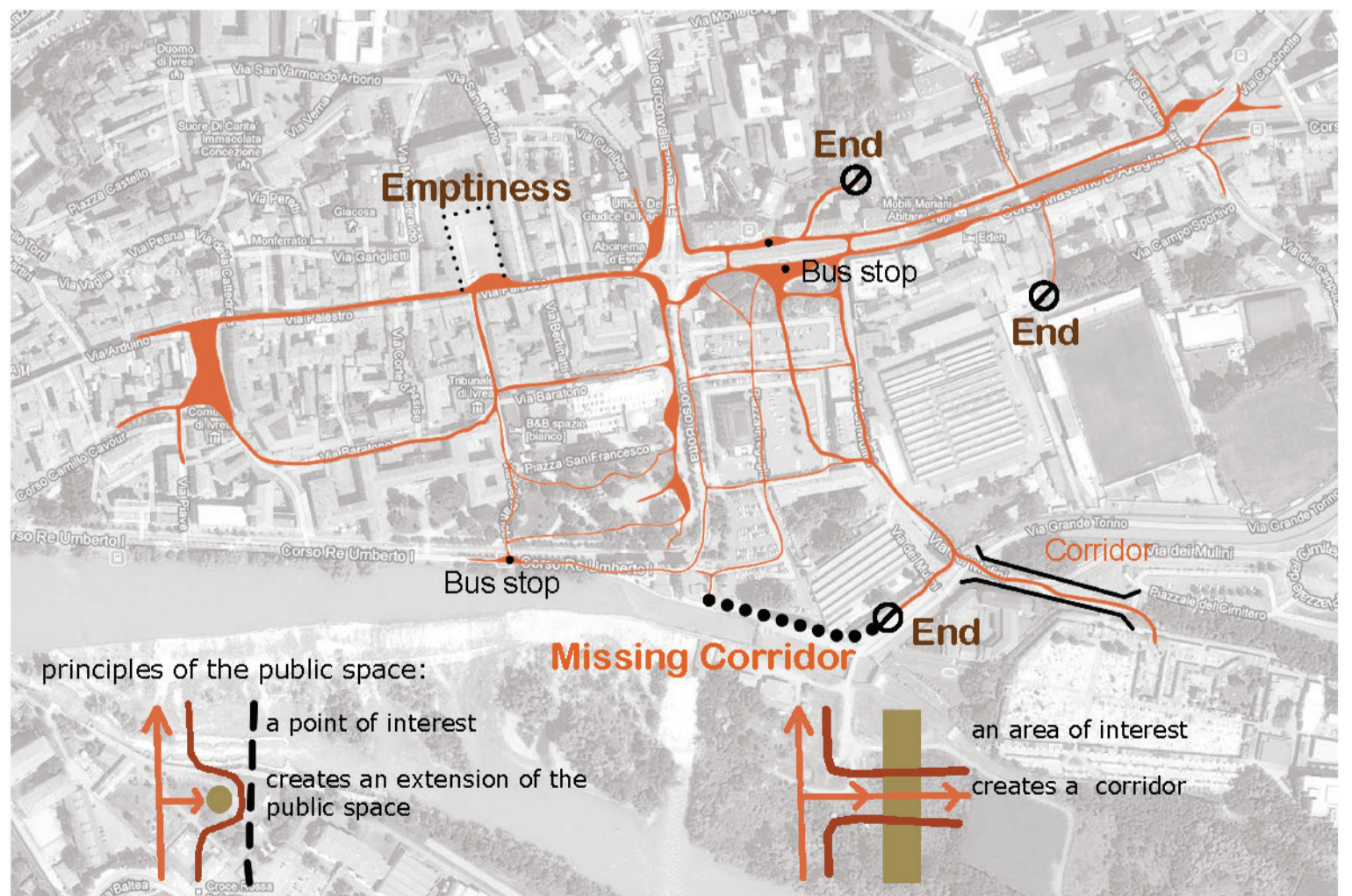


## Urban Structure + Natural Resources



## Mobility Structure + Developing Approaches

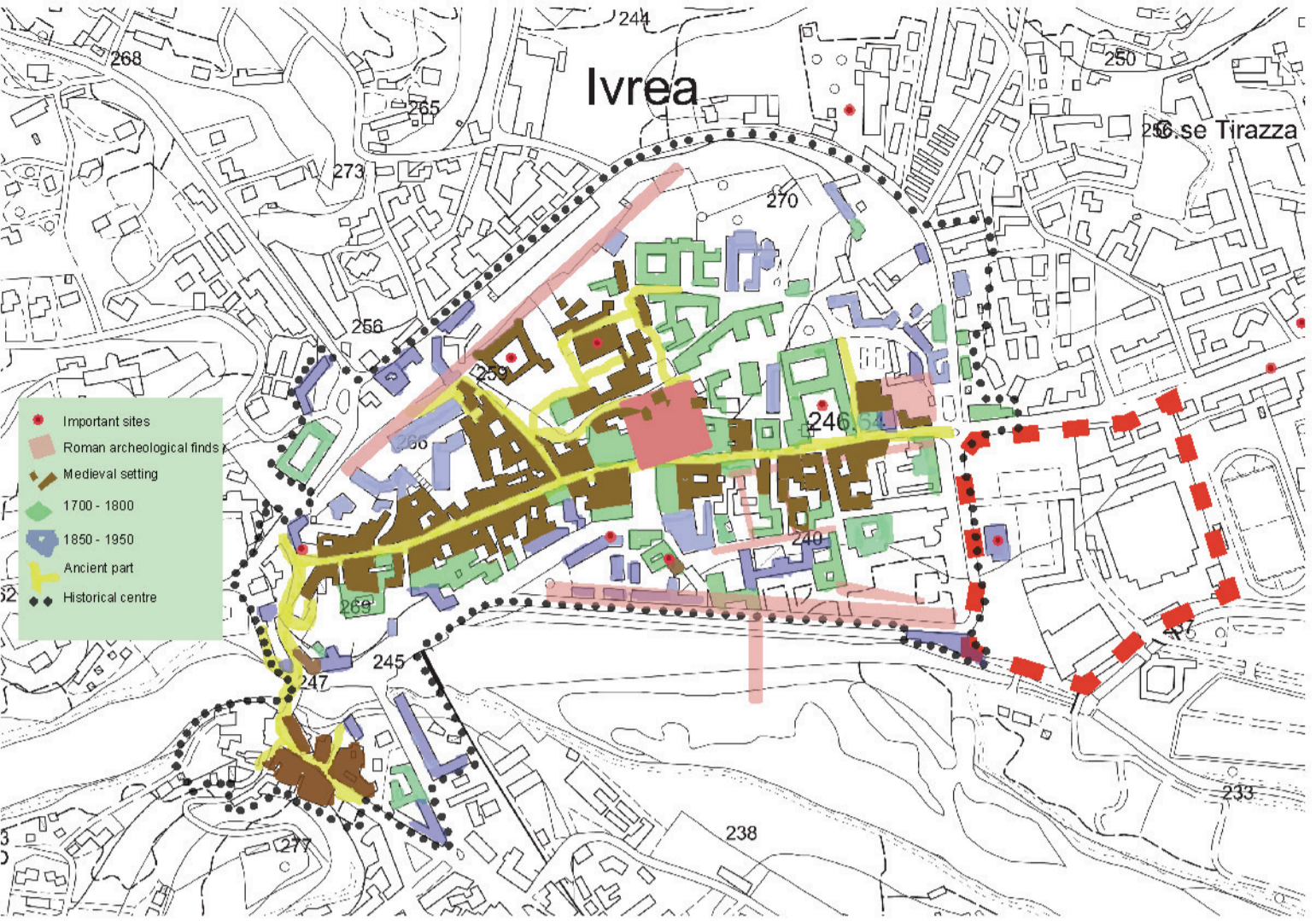
## Historical City + Modern Olivetti + Ivrea Site Identity



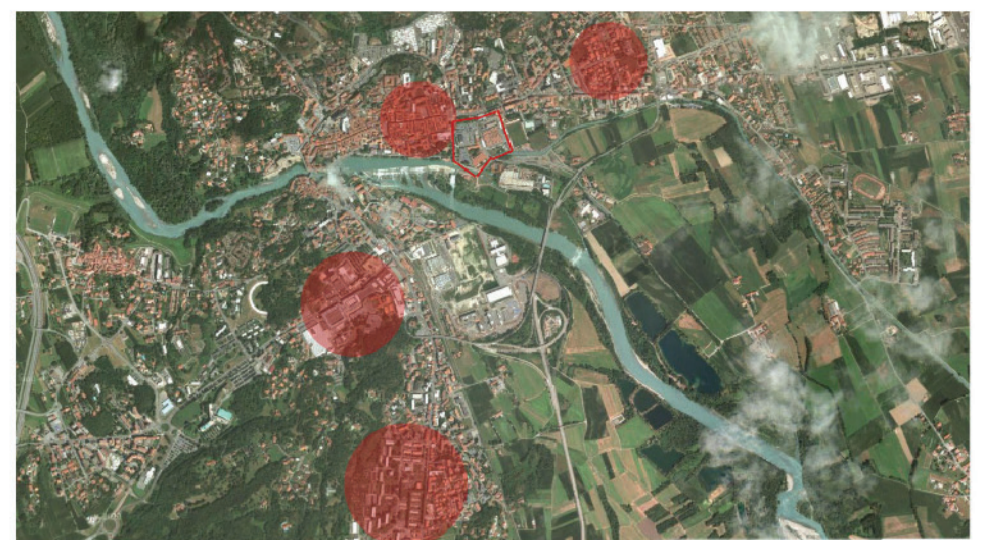
## Less Continuous + Missing Connection



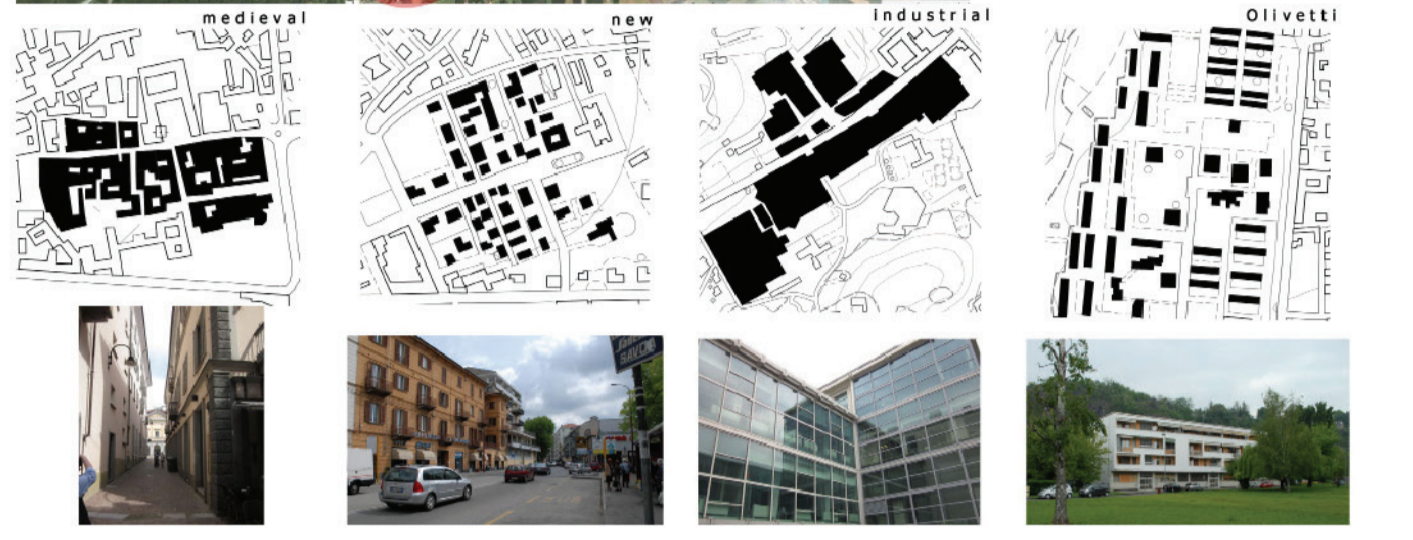




Previous Formulation + Cultural Loci

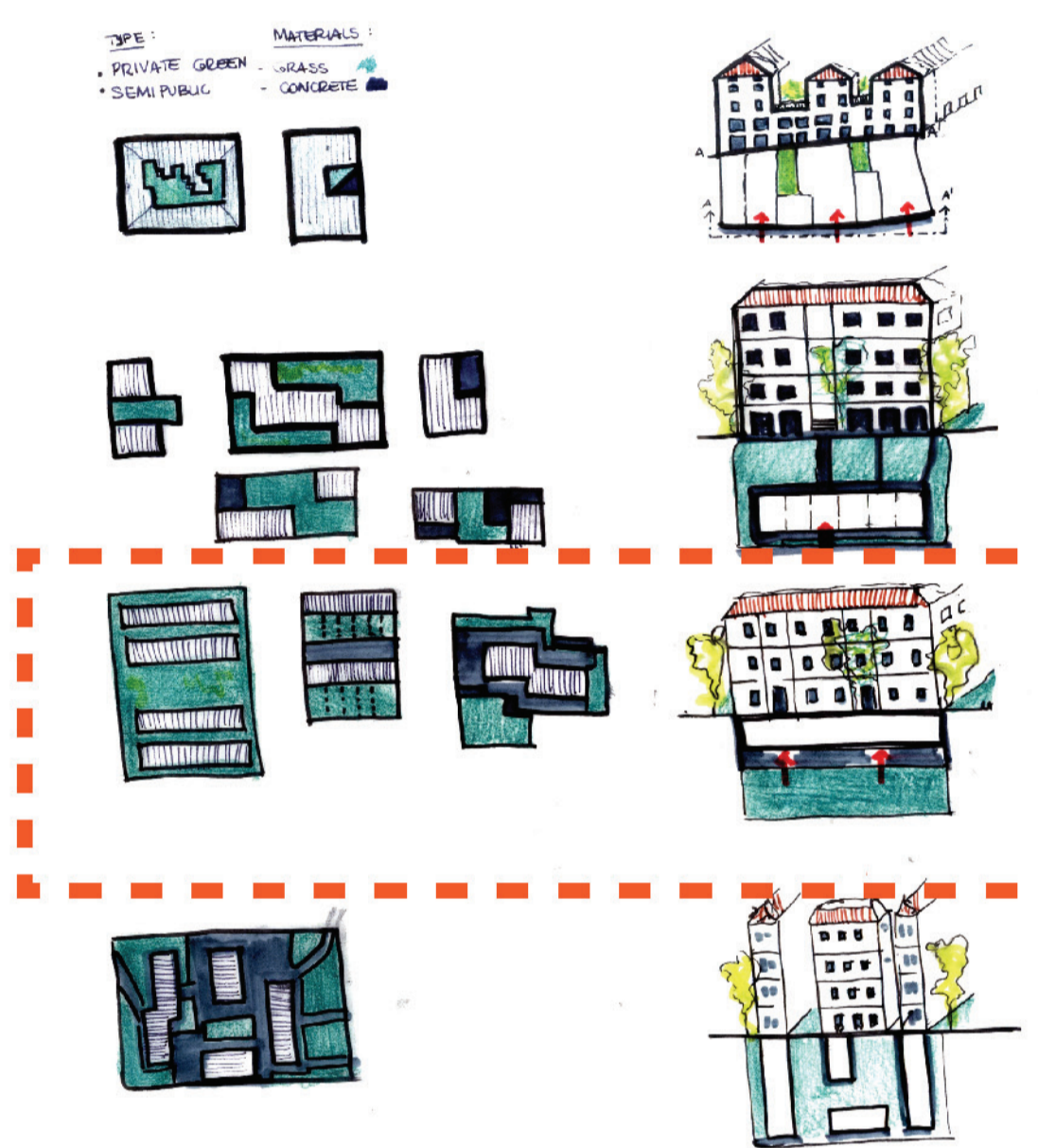
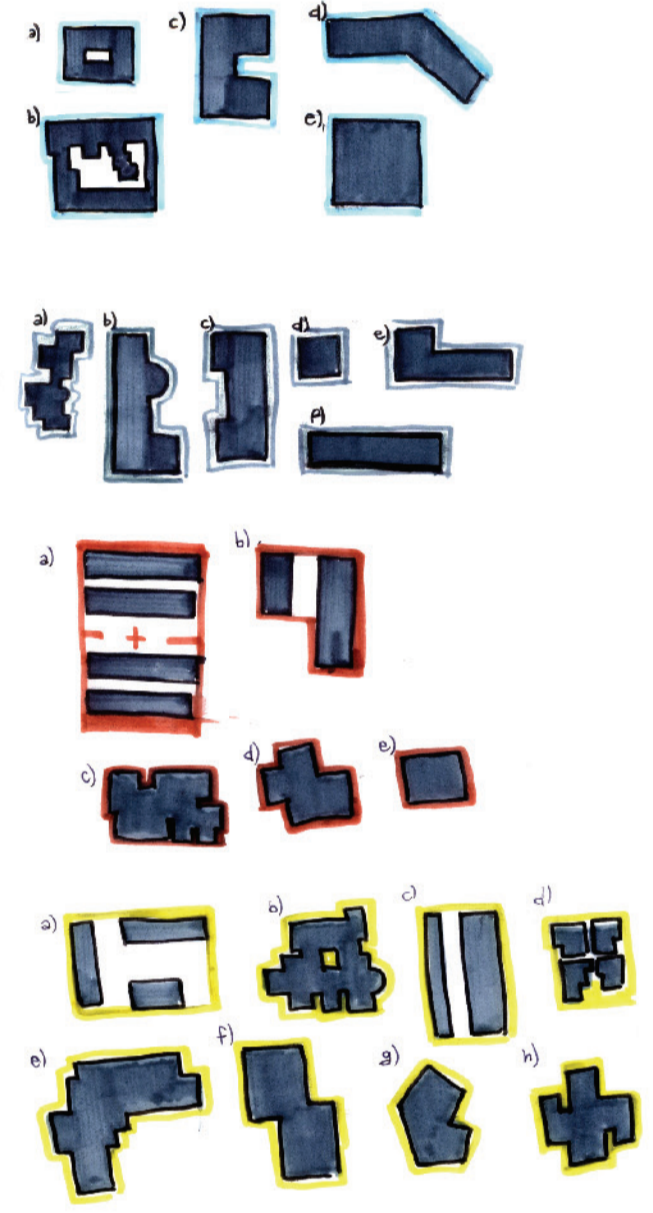
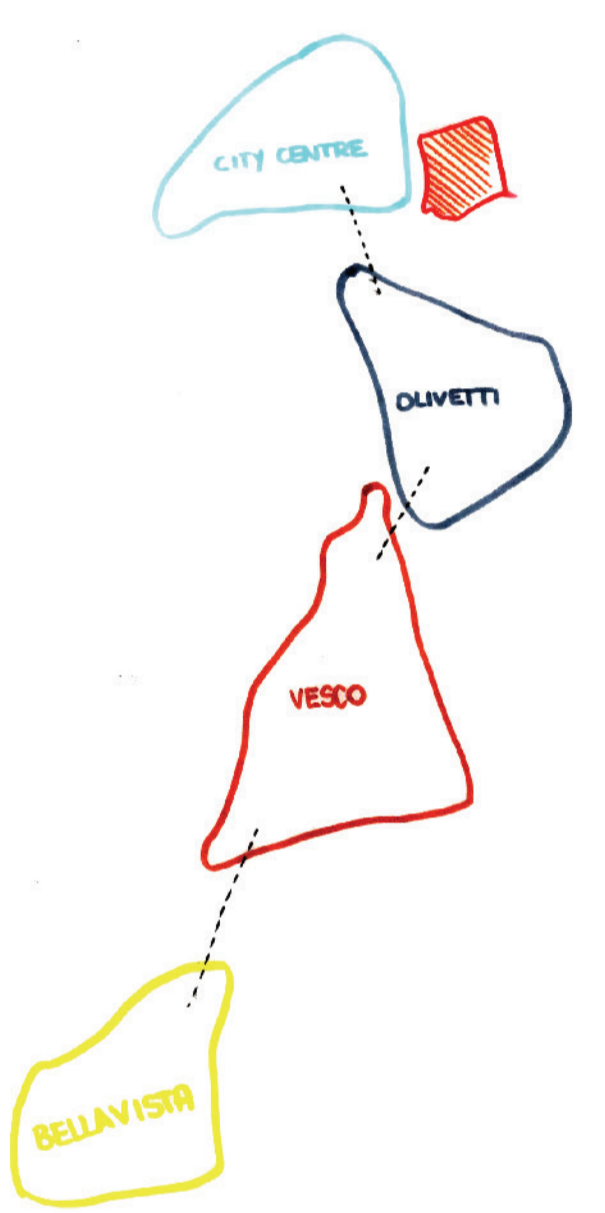


Ivrea\_patterns



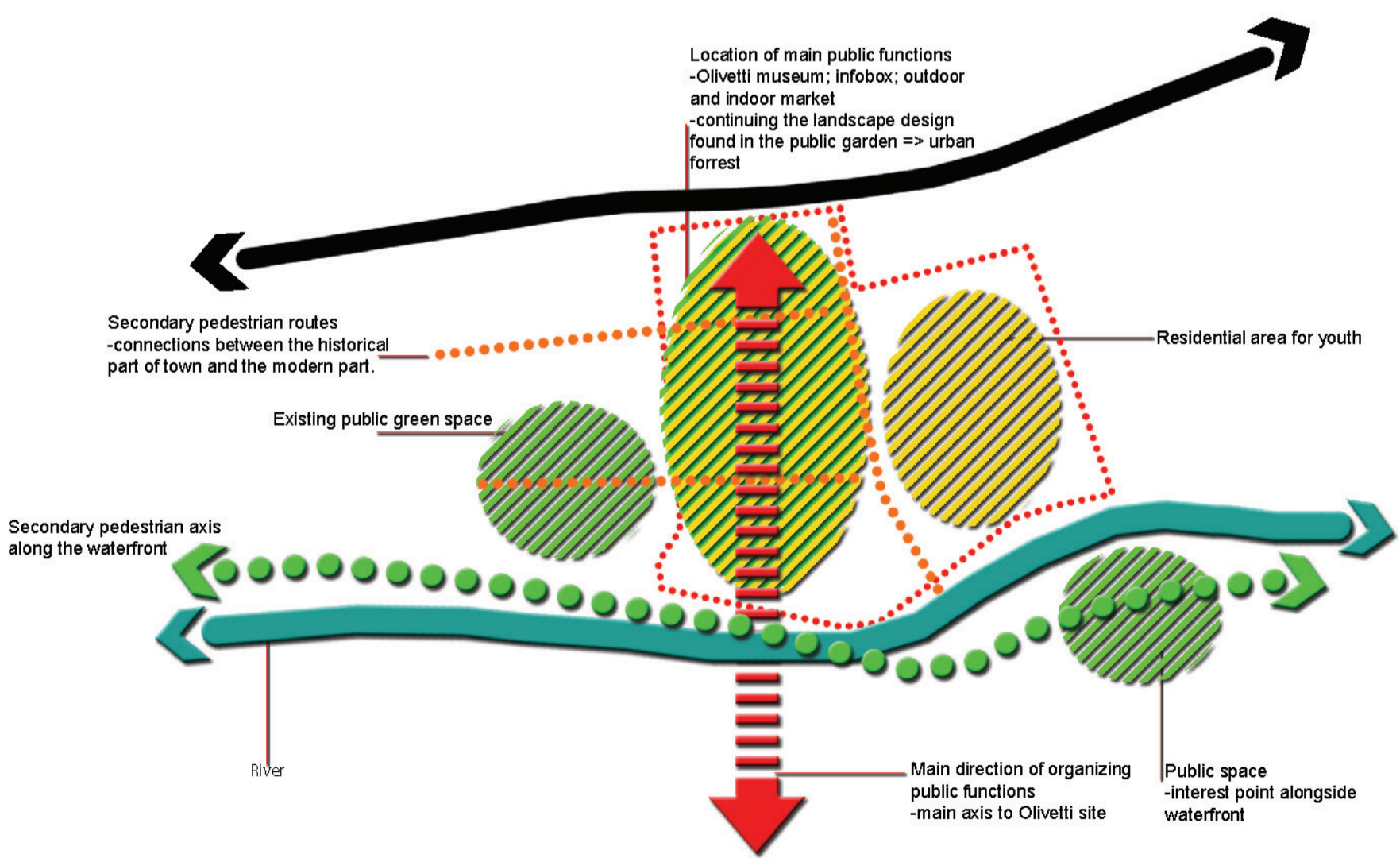
Particular Typology + Life Patterns

Residential Building Type + Local Statistic

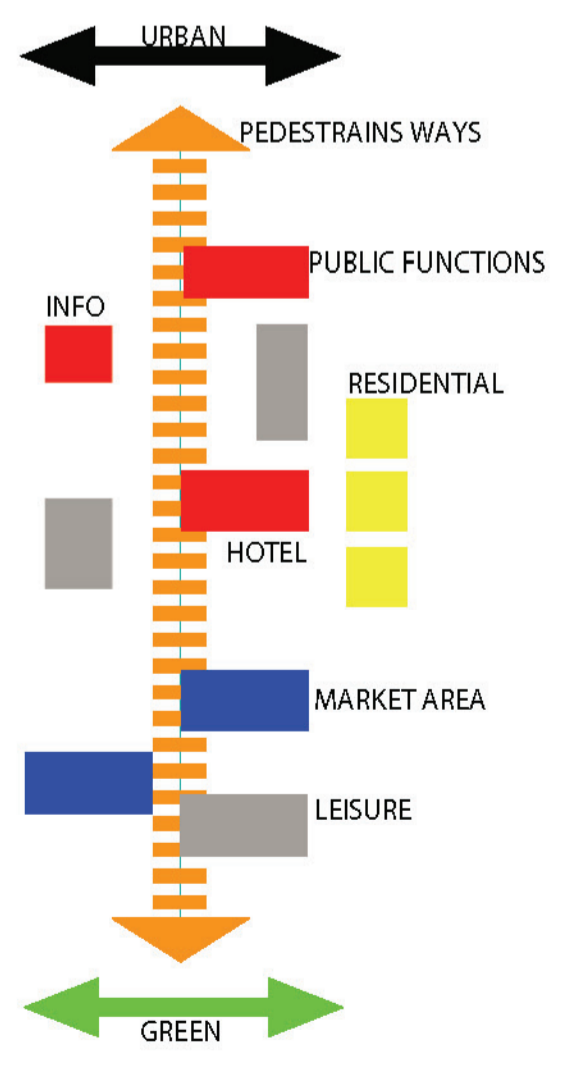


- Society:**
  - ✓ Average: 35-44, 45-54, 75 over
  - ✓ Civil state: Married: 48%, Unmarried 38%
  - ✓ Person per family: 2-3 persons
- Economy:**
  - ✗ Transportation
  - ✗ Agriculture
- Conclusion**
  - ✓ Need of small flats (3 types) Space for leis
  - ✓ Pedestrian way New route system.
  - ✓ Private garden

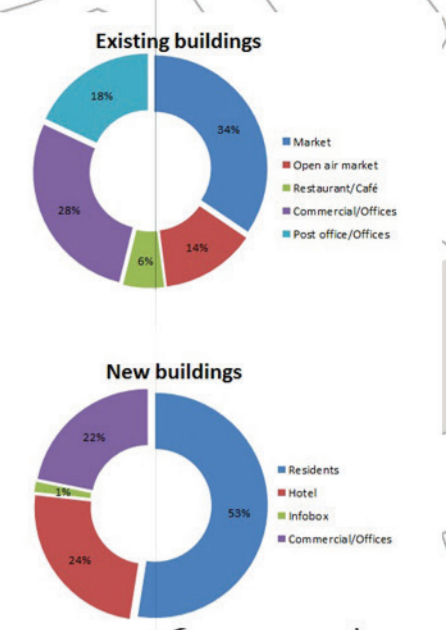
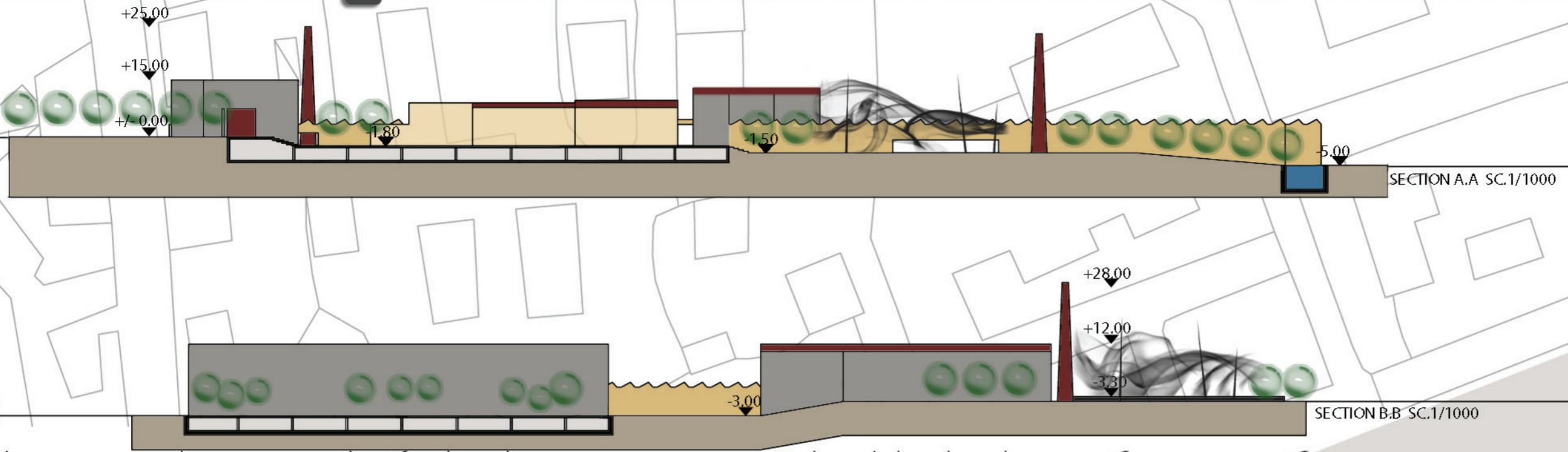
## City Visions & Site Formulation



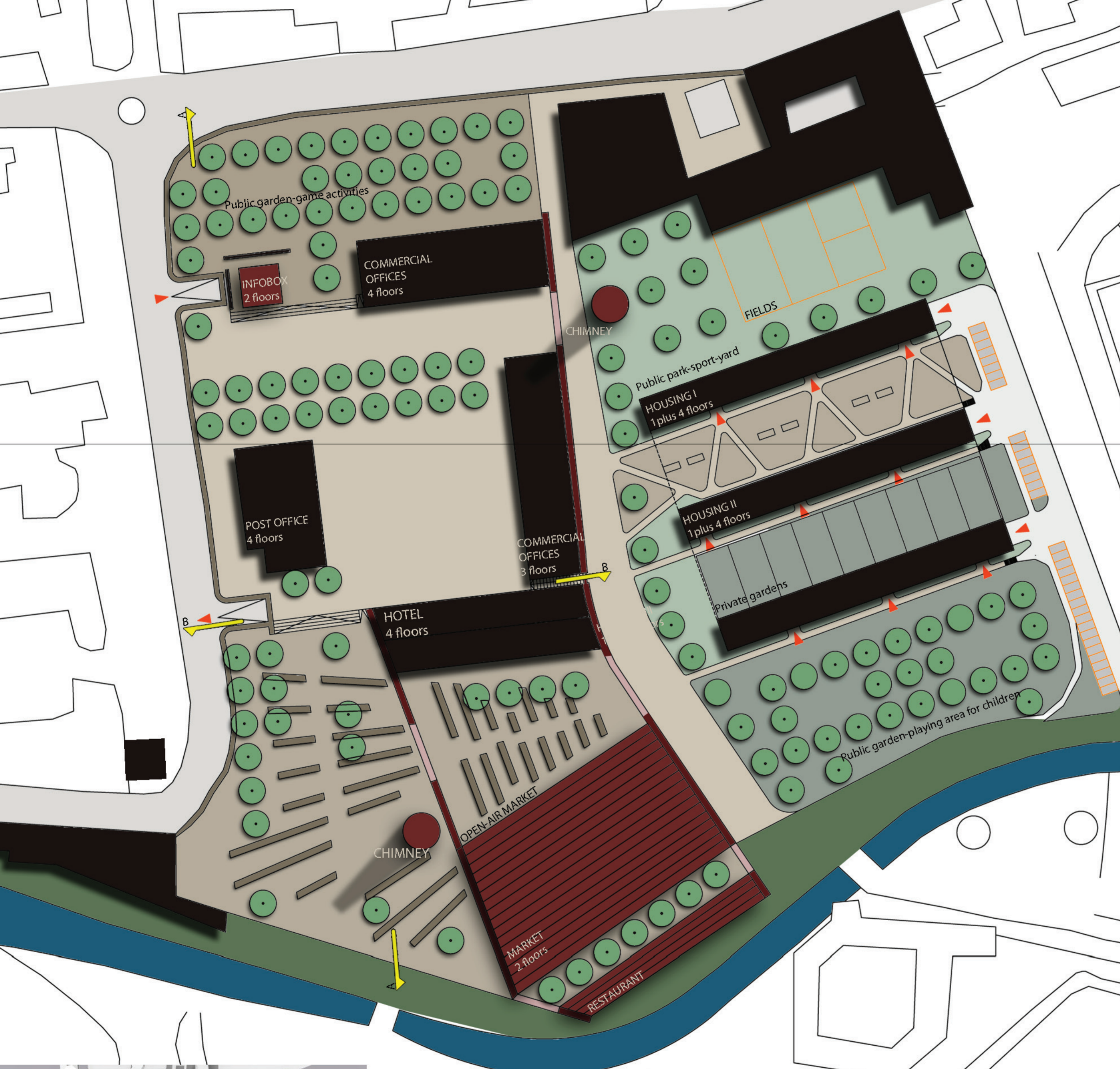
## Stitching + Continuity







MASTERPLAN SCALE 1:1000



**LEGEND**

**Circulations**

- Car circulation
- Pedestrian circulation
- Public garden area
- Market area
- materials: ecological pavement; green space
- Ground floor parking

**Buildings**

- Market
- Market stalls
- Chimneys
- Infobox
- Existing tower
- Existing-extended wall

**Green Space**

- Main pedestrian route
- green space
- Private gardens
- Allignment of trees
- Betula endula
- Platanus
- River Dora



3D VIEWS







**I Market place** **Public park II**

\_colourful  
\_a link among people

\_freedom  
\_anyone's

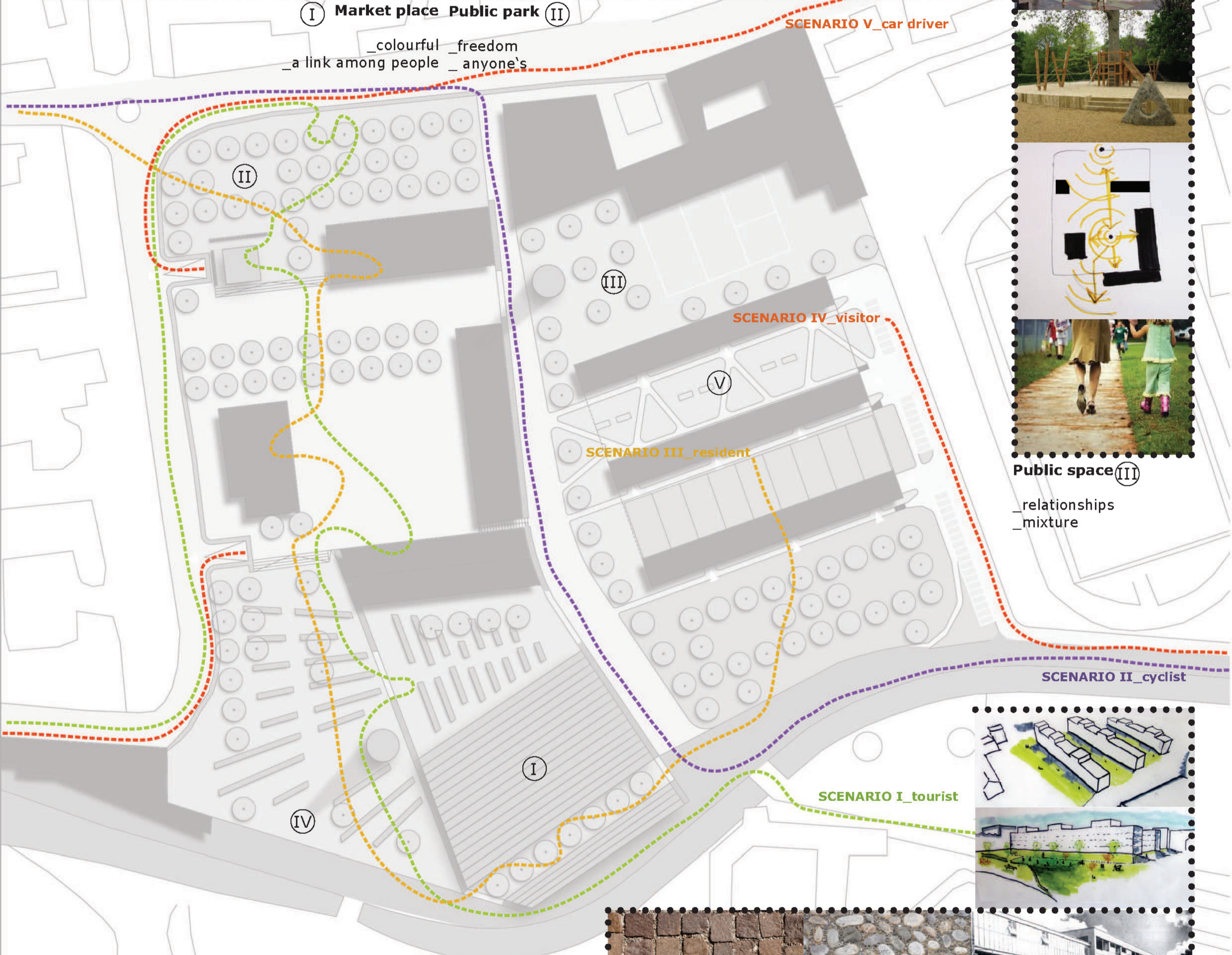


**SCENARIO V\_car driver**



**Public space III**

\_relationships  
\_mixture



**Public space III**

\_relationships  
\_mixture



**Riverside IV**

\_contextual stream  
\_contact



**V Resident housing**

\_diversity  
\_a private piece of land