

LOCAL NETWORK OF FOOD HERITAGE AND AGRICULTURE

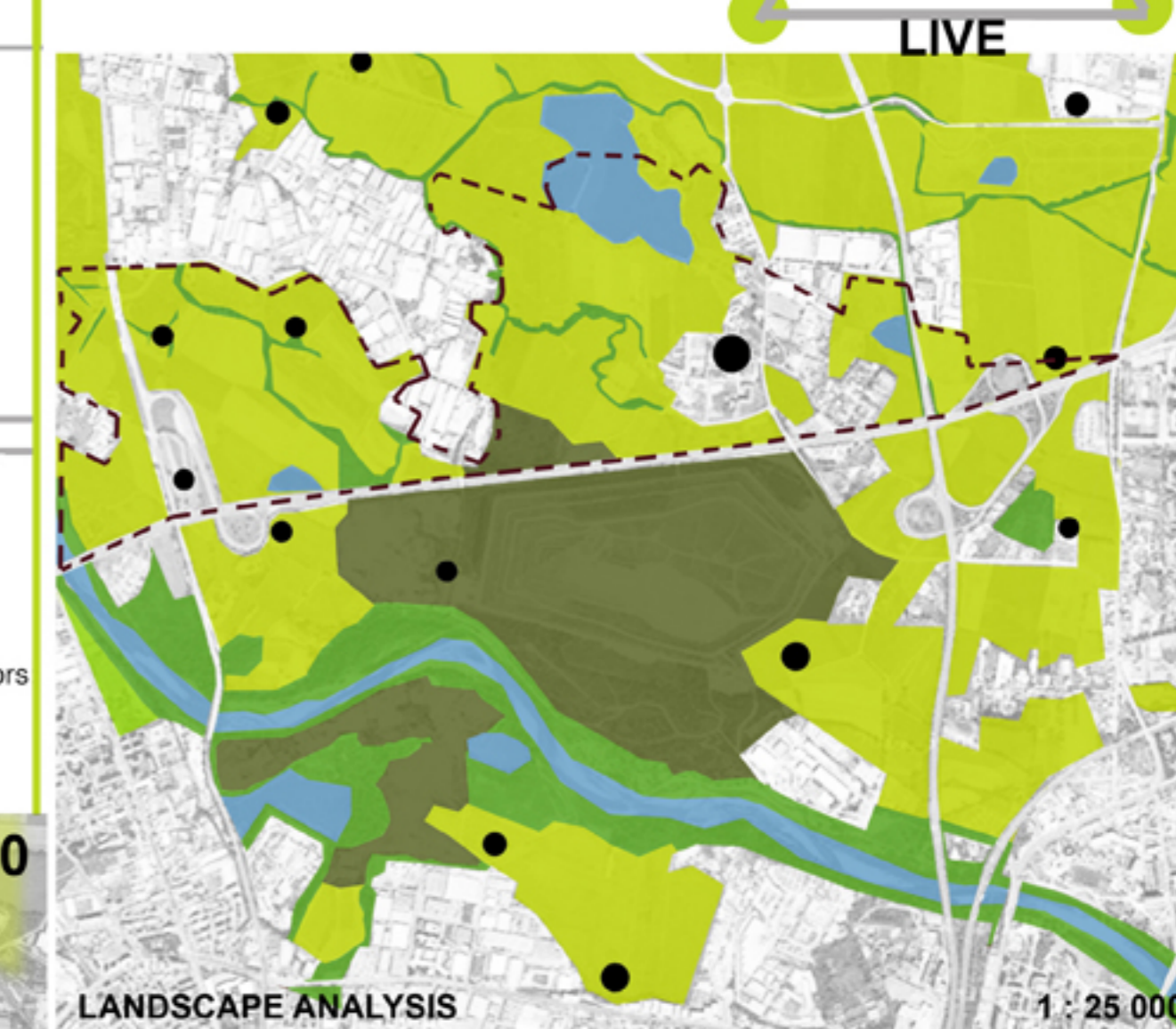
GROW
AGRI
CULTURE
EXPERIENCE
LIVE

STUDY AREA

SWOT ANALYSES

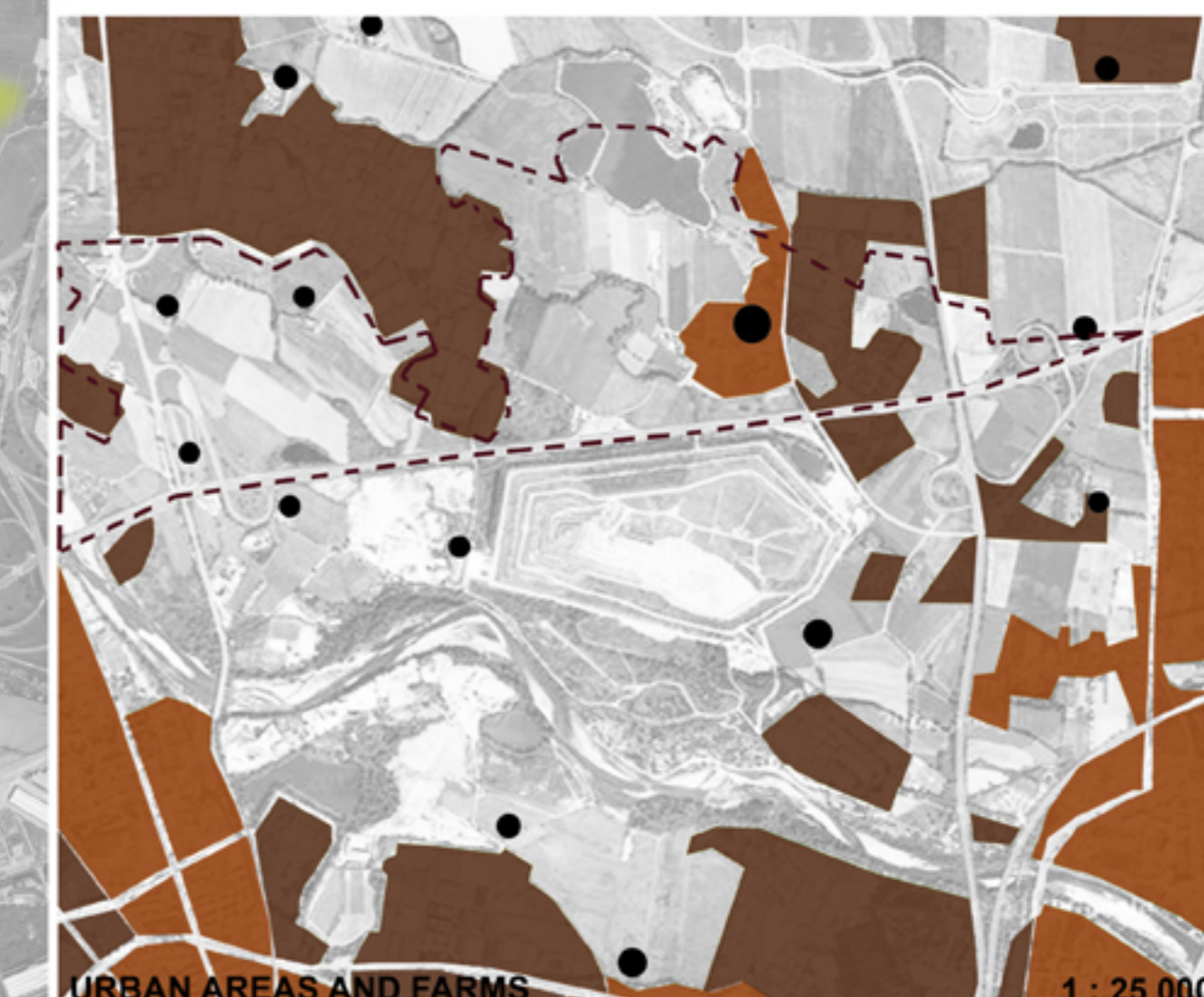
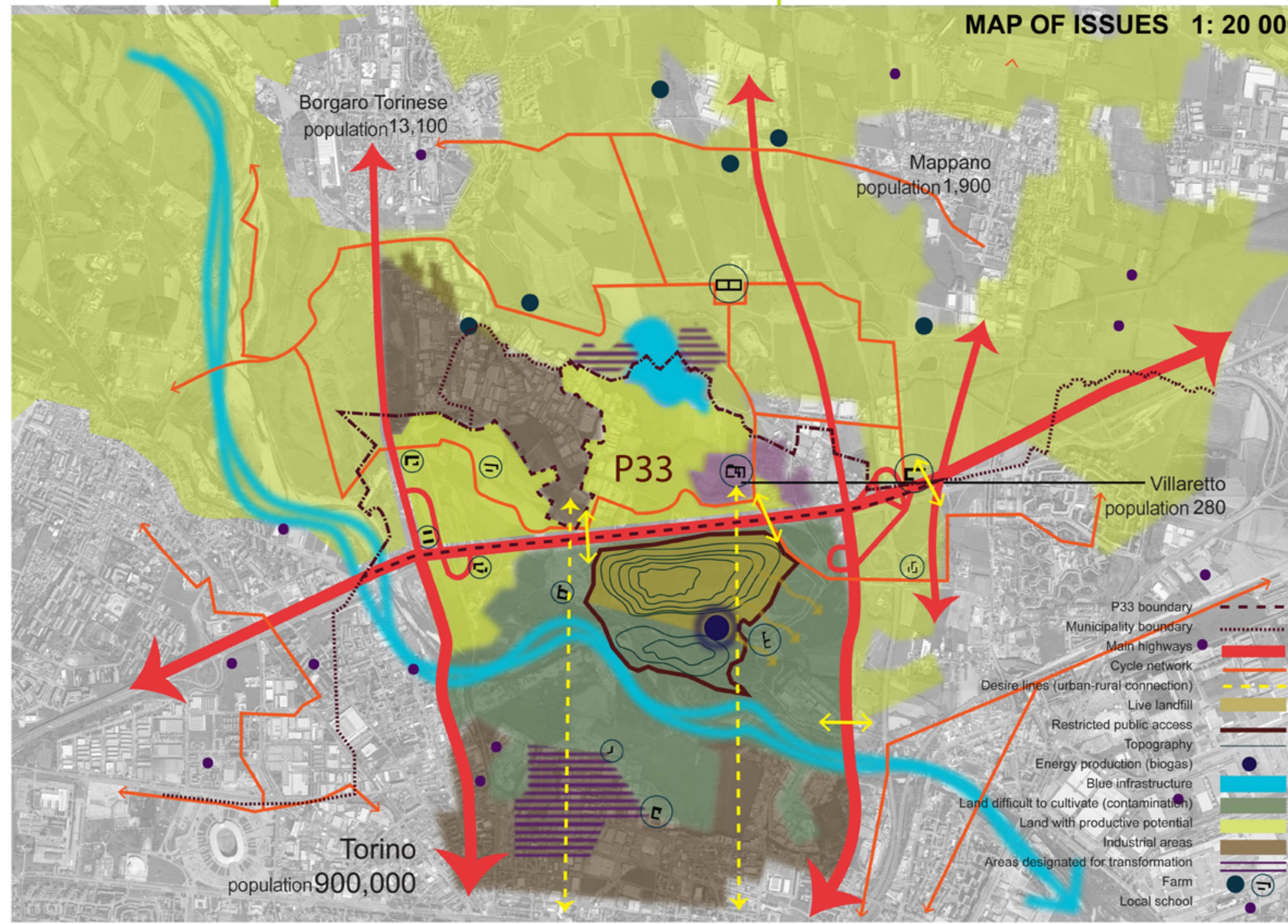
- STRENGTHS**
- irrigation canals
 - ecological corridor- high biodiversity and attractive use of landfill and river corridor
 - existing blue infrastructure (river and lakes)
 - several surrounding settlements provide potential users;
 - close proximity of the site to the city of Torino;
 - diverse landscape- topography of landfill, River Stura and agricultural plains;
 - existing tree lines create attractive routes and increase biodiversity and quality of habitats for animals and plants;
 - several traditional farm buildings of heritage value, providing a examples of a variety of farm types (e.g. C structure, L structure etc);
 - some existing farms with social function- educational farm to east;
- OPPORTUNITIES**
- utilise and expand existing irrigation canals for agricultural productivity;
 - connect/create a gateway through industrial transformation area to the south;
 - enhance and expand existing biodiversity;
 - link in with education establishments- local schools, colleges, agricultural courses
 - link in with Slow Food movement in Torino;
 - use existing farm buildings for agricultural, or new functions;
 - use Villaretto as a focal point, using the existing unused spaces for new functions;
 - use landscape features and agriculture for sustainable local energy production- rural
 - use existing small connections for cycle/pedestrian access;
 - use the attractiveness of river environment as a gateway, or attraction;
 - use petrol station as a vehicle entry point/car park for visitors

- WEAKNESSES**
- highly industrialised areas disrupt the natural and agricultural character;
 - contaminated land to the south of the River Stura;
 - several barriers to movement including the River and the highways infrastructure;
 - noise pollution from vehicles;
 - lack of services and activity in Villaretto;
 - lack of designated cycle connections;
 - public transport for local people is poor- many own cars;
 - administrative boundary cuts through site;
 - gypsy camp located on the north bank of the River Stura;
 - patchwork of public/private ownership;
- THREATS**
- land assembly requirements (redistribution of ownership is possible, but may complicate/prolong development process);
 - future of the landfill is uncertain- land is unstable/changeable and public access is restricted for an unknown amount of time;
 - unknown pollution caused by landfill and industry through watercourses and contamination of land may hinder agricultural productivity;
 - gypsy camp may be difficult to relocate, or affect public perceptions of safety for visitors
 - high speed rail is set to cut through site, however negotiation may be possible;



LANDSCAPE ANALYSIS 1: 25 000

- Industrial green
- Agriculture green
- Natural green
- Water areas
- Existing farms
- Administrative border



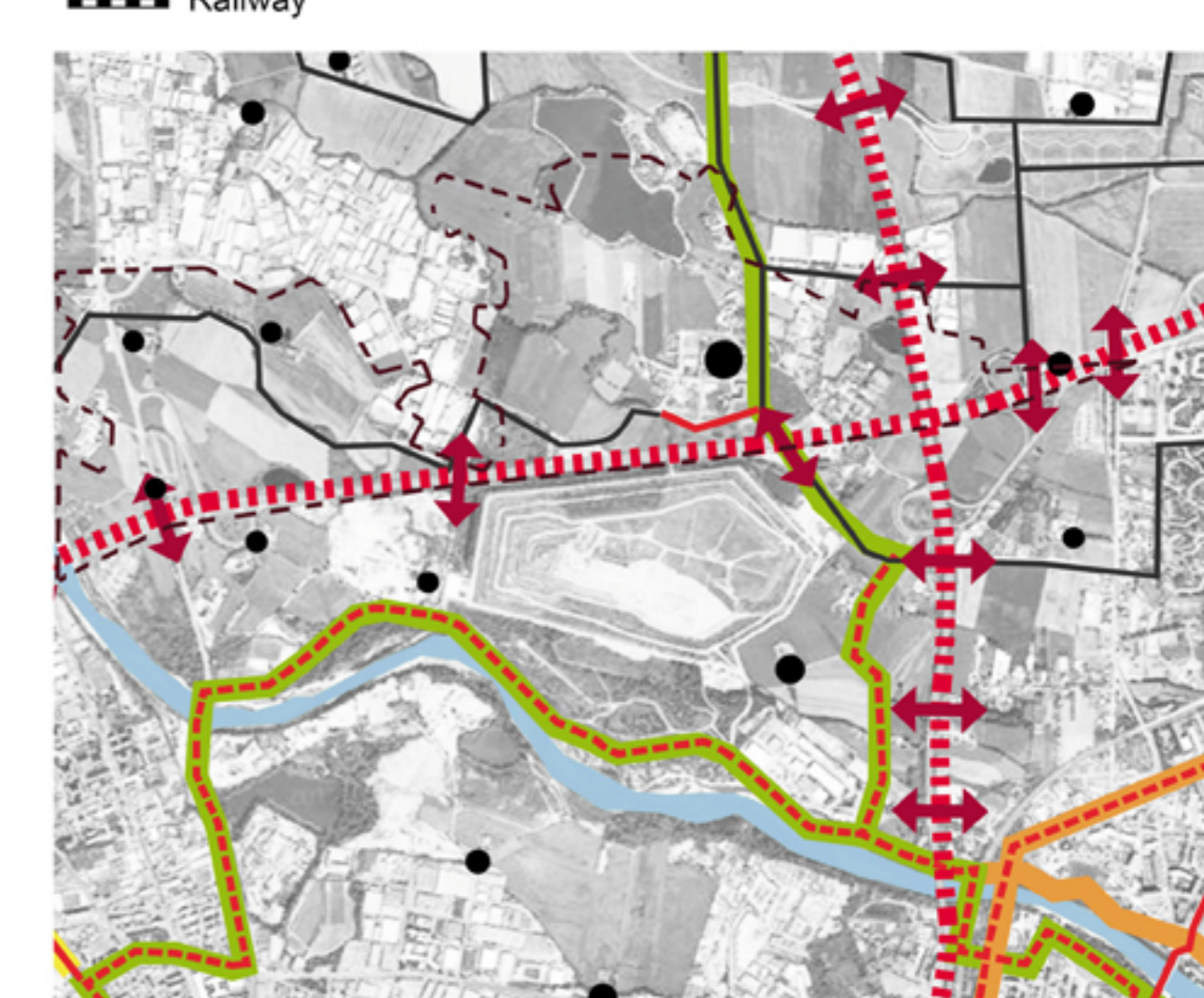
URBAN AREAS AND FARMS 1: 25 000

- Industrial character
- Residential character
- Existing farms
- Administrative border



INFRASTRUCTURE 1: 25 000

- Highway
- Highway exits
- Main road
- Railway
- Public transport
- Existing farms
- Administrative border



SLOW TRAFFIC AND CONNECTIONS 1: 25 000

- Highway crossing
- Greenbelt bicycle lane
- Urban bicycle lane
- Bicycle path - existing
- Obstacle of highway
- Bicycle path - proposal
- Bicycle lane - in a road
- Existing farms
- Administrative border

LOCAL FARM BUILDING with special function

Historical use

- agricultural products
- dairy products
- cattle breeding
- storage
- stable and barn
- residential
- market
- fruits
- rose garden

Structure

- Agricultural use
- Vacant/Unused
- No data

Related to the city

- Self-standing
- Part of the city structure
- Close to the city

Rural values

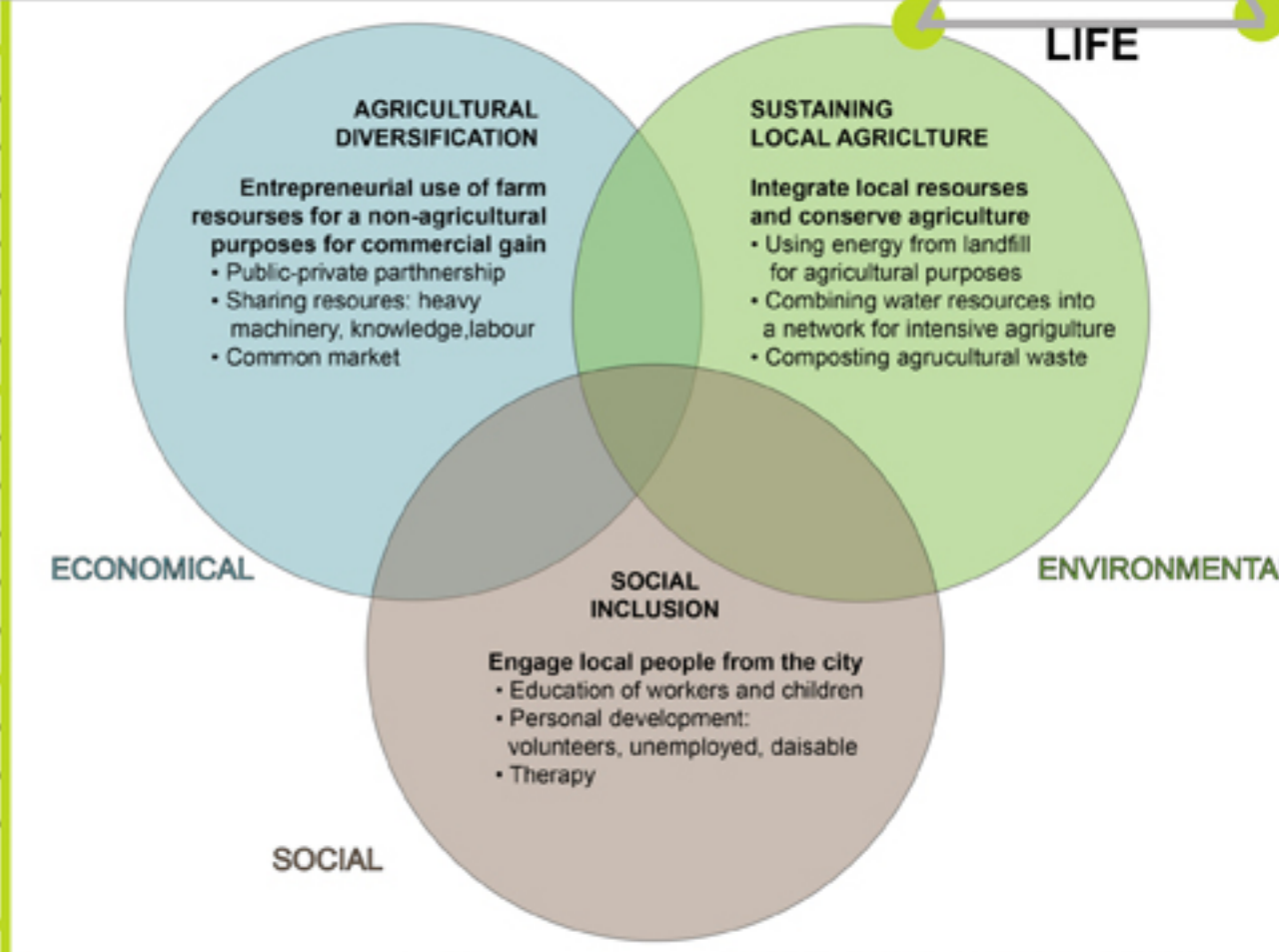
- Path of memory

Inset photos: Stroppiana, Santa Cristina, Rostia, Francese, Lamarmora, Vigittello, Bertia, Bellacomba, Ressaia, Canonico, Nobella, Palazzotto, Farinasso, Casa Bianca, Falchera, Villaretto.

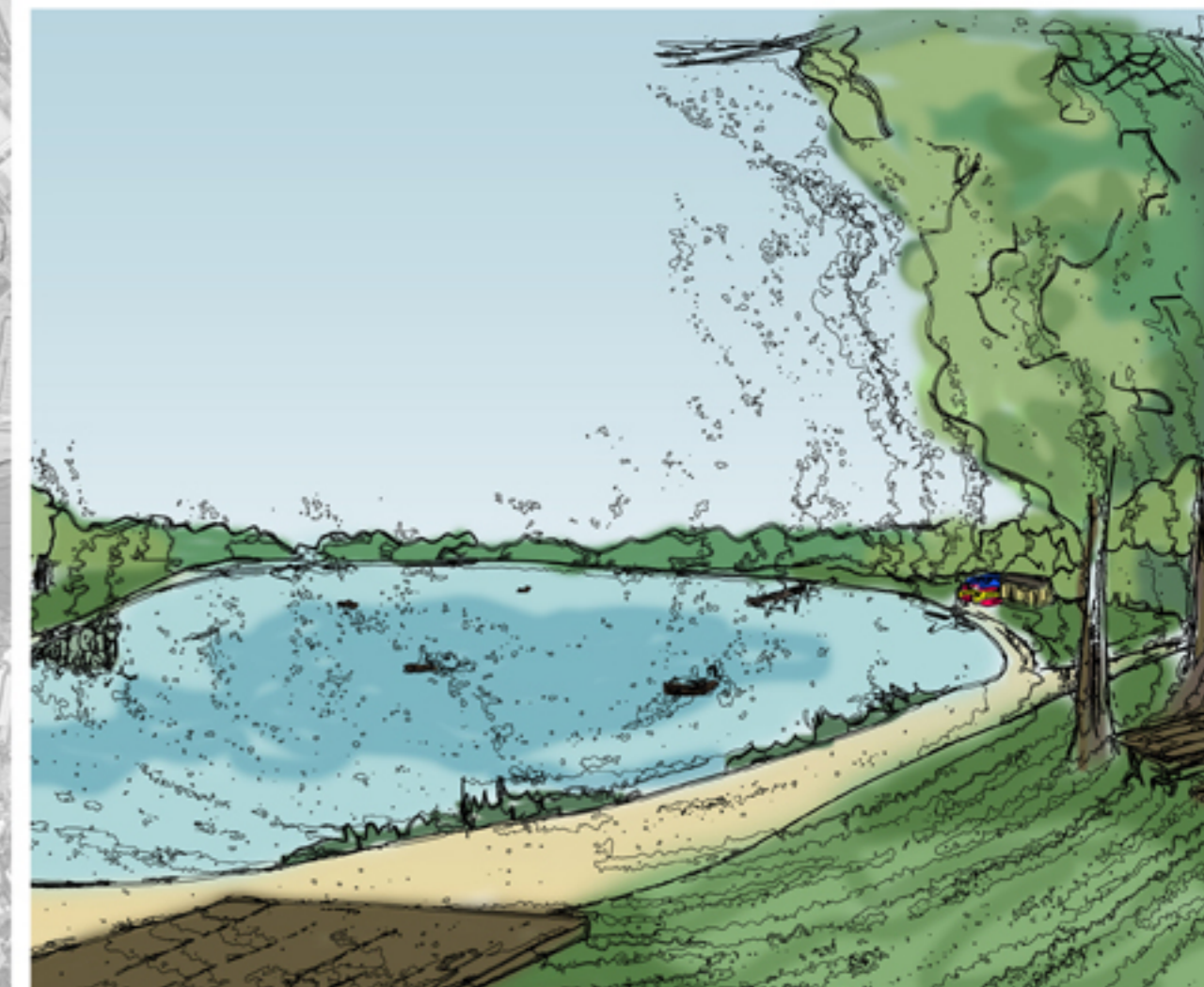
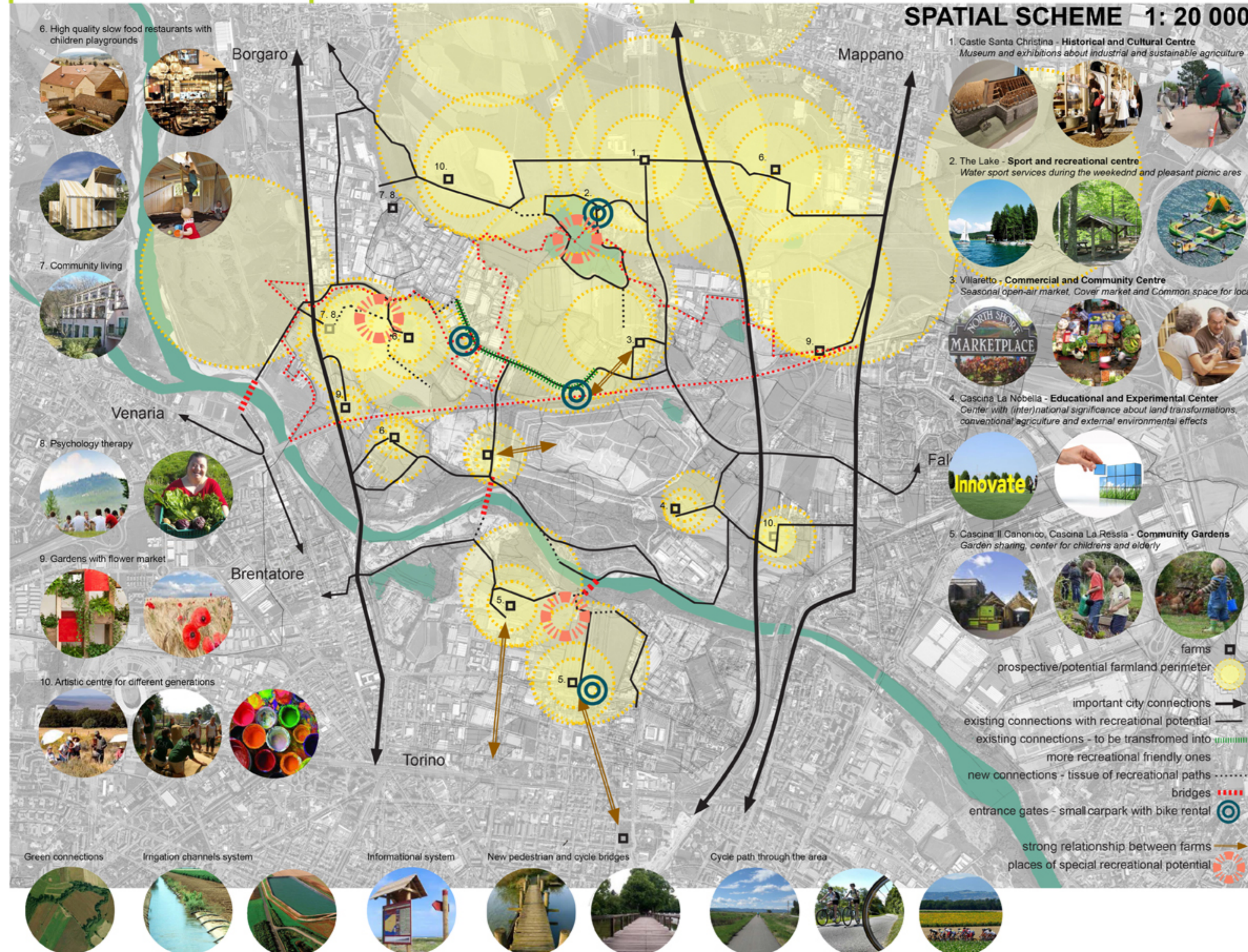
LOCAL NETWORK OF FOOD HERITAGE AND AGRICULTURE



Let's put "human" culture into AGRiculture!



SYSTEM OF PROPOSAL	DETAILED GOALS	PROJECTS
STRATEGICAL GOALS		
DESIGNING A SUSTAINABLE MODEL OF AGRICULTURE COMBINED WITH SOFT RECREATIONAL USES	Network of productive farms with special functions Supporting Italian produce Creating a closed system of energy use and waste and water	Design a model of public and private ownership, creating a co-operative land bank Define focal themed farms - education, heritage, market Designate non-productive land for recreational meadows Design appropriate edges of recreational routes for stopping points Allocate a local market in Villaretto where local produce can be sold Networks of irrigation canals Improve local roads
DESIGNING A PROGRAMME OF SOFT RECREATIONAL USES INTERLINKED WITH AGRICULTURE	Network of paths and cycle routes to create a recreational greenway and facilitate sustainable community Provide small en route attractions along the path network Green corridors	Improve local roads for cycle network and slow traffic Create 2 bridge connections over the river Small surface car parking spaces in several gateway locations. Design a clear information system Provide places for art/sculptural works Preserve the existing agricultural landscape character Community gardens where social groups can interact Shared gardens, allotments, farmyard animals, therapeutic gardens Provide mixed housing in Villaretto for elderly people
ACTIVATE SOCIAL INTERACTION AND COHESION	Use agriculture to generate social cohesion between age generations, race, social status etc Bringing and connecting the urban population to the rural countryside	Create a service area around the lake for picnics, watersports



MODEL SITUATION OF SYNERGIC FARM NETWORK
case: sheltered community for disabled + training center farm + cooperative garden for public

