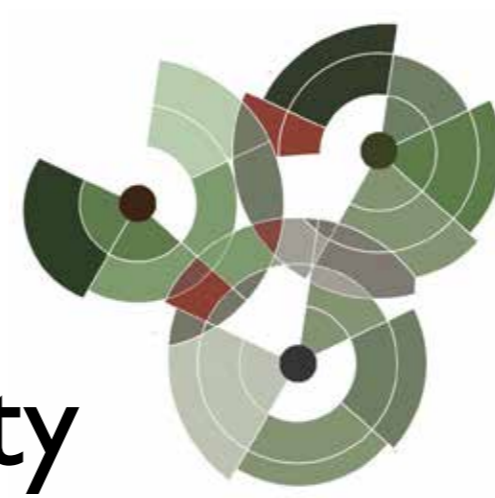
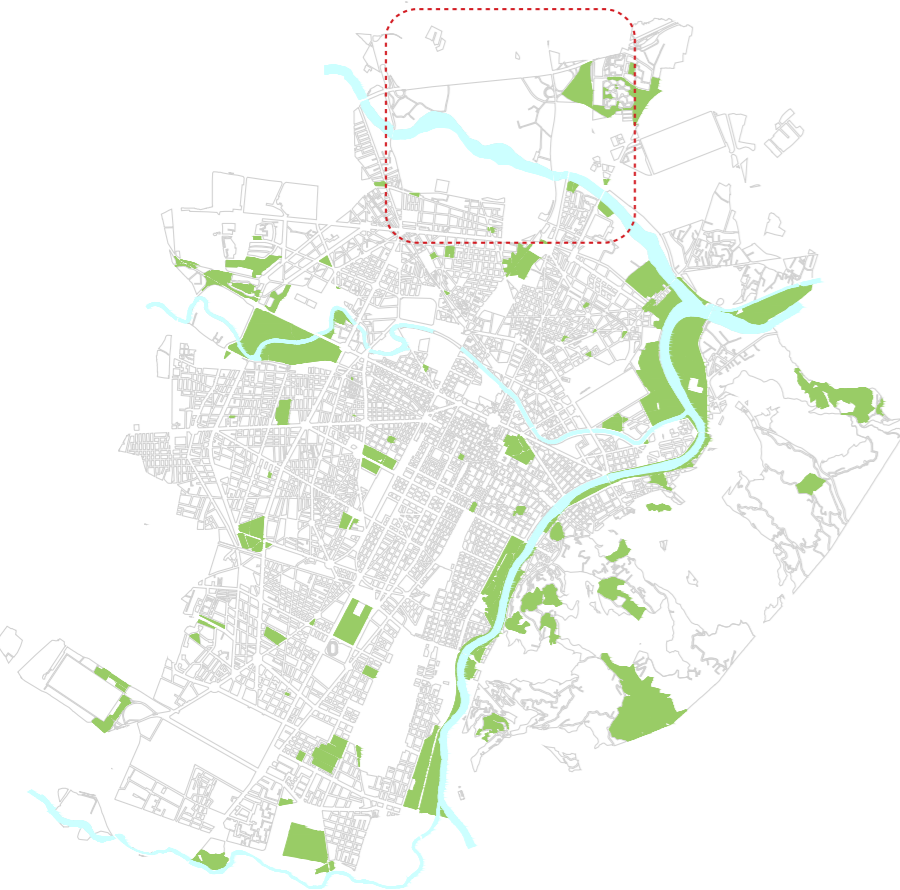


growing agriCULTURE



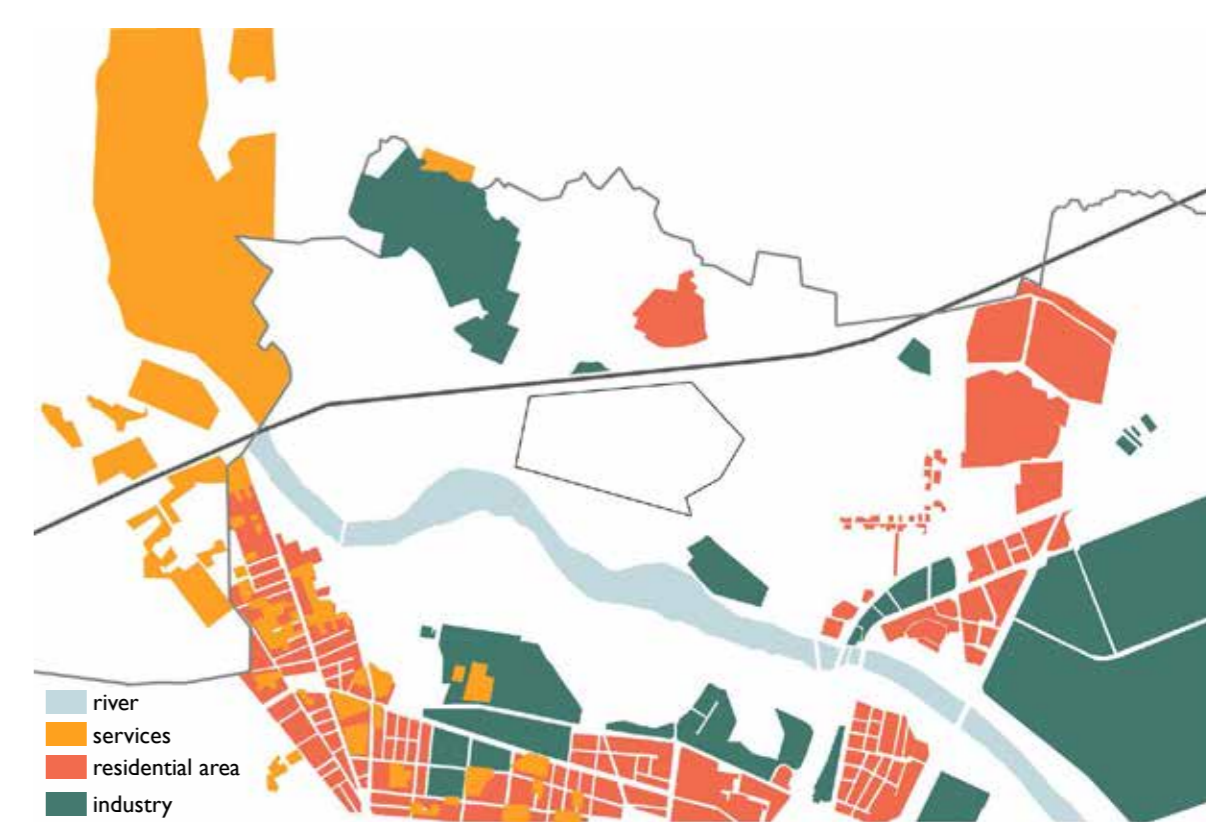
Torino, Italy's Opportunity

The city of Torino has experienced physical growth expanding from the dense urban core onto the rural landscape creating peri-urban environments. This encroachment has left the agricultural landscape at risk of disappearing under the built and industrial environments. A new outlook on the role of agriculture and its connection to the city of Torino and the green network will allow for a new cultural landscape to develop ensuring protection of agricultural lands and natural resources. Implementation of a program rich with agricultural participation activities will be the catalyst for involving the city and community within this new cultural landscape.

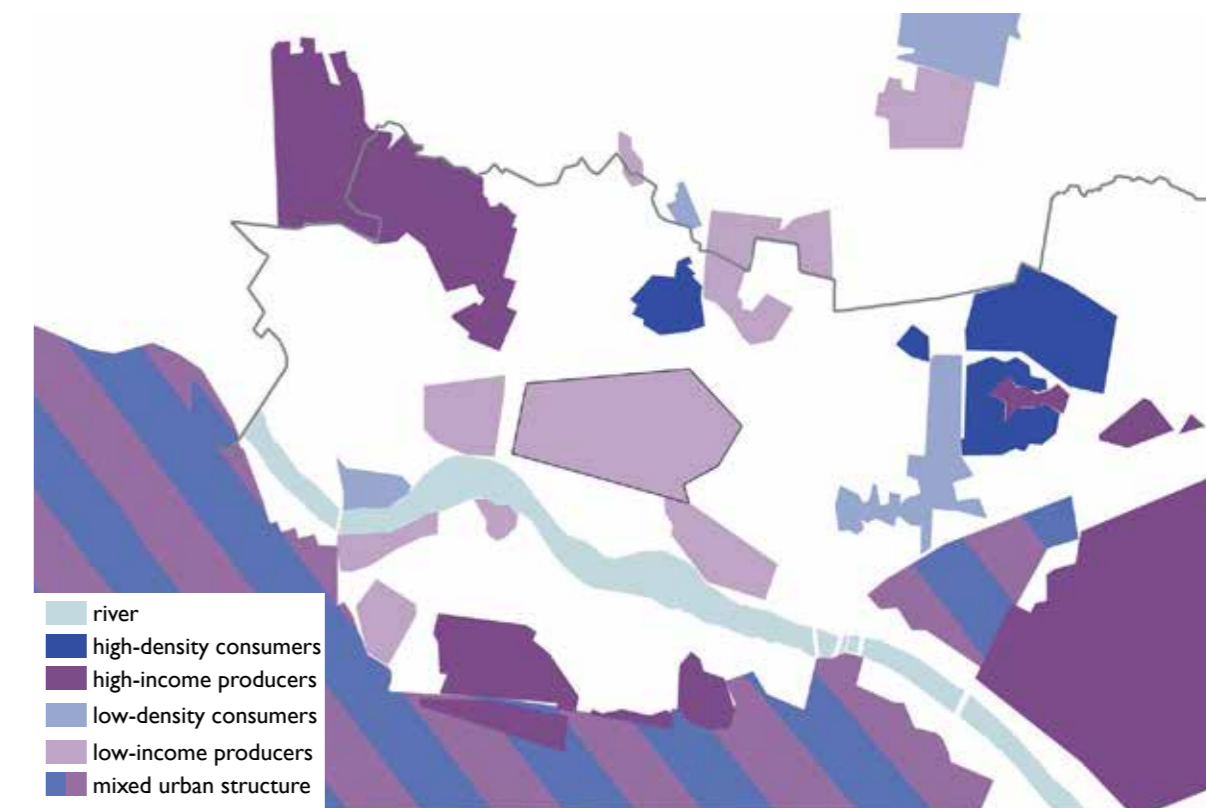


Landscape Analysis

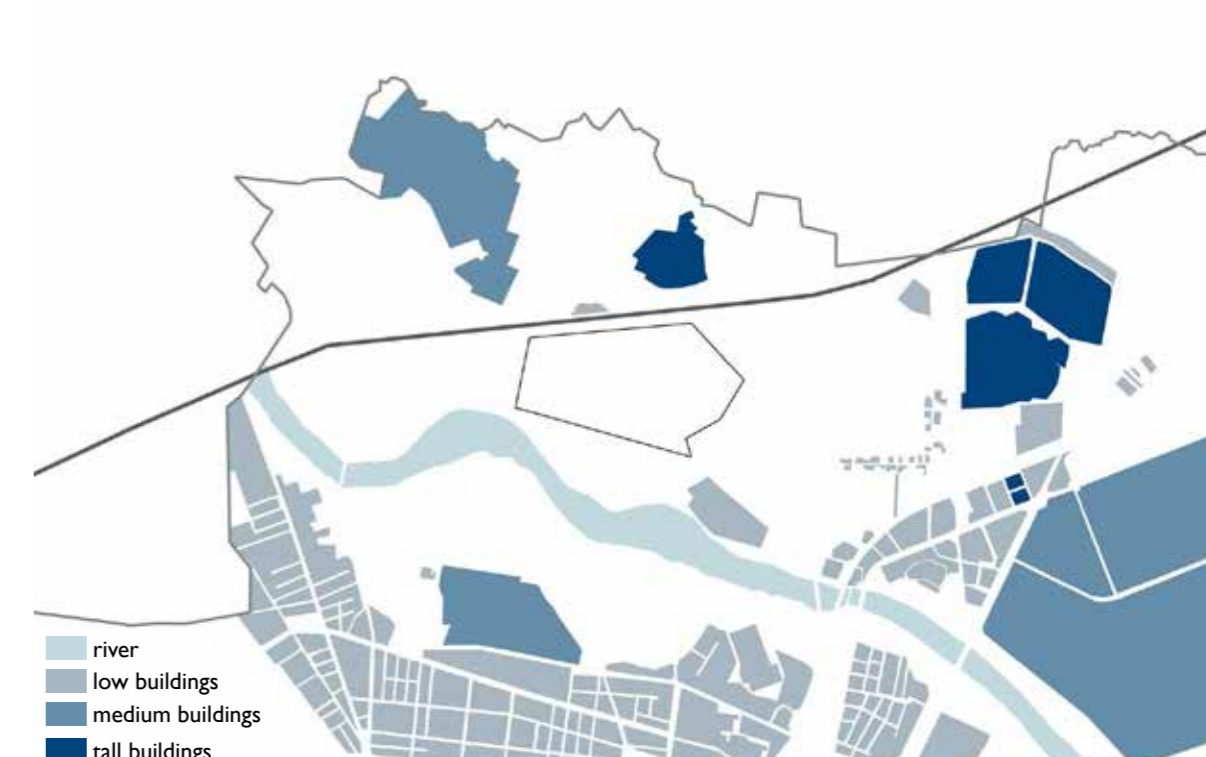
Functions mixture of incompatible functions creating separations



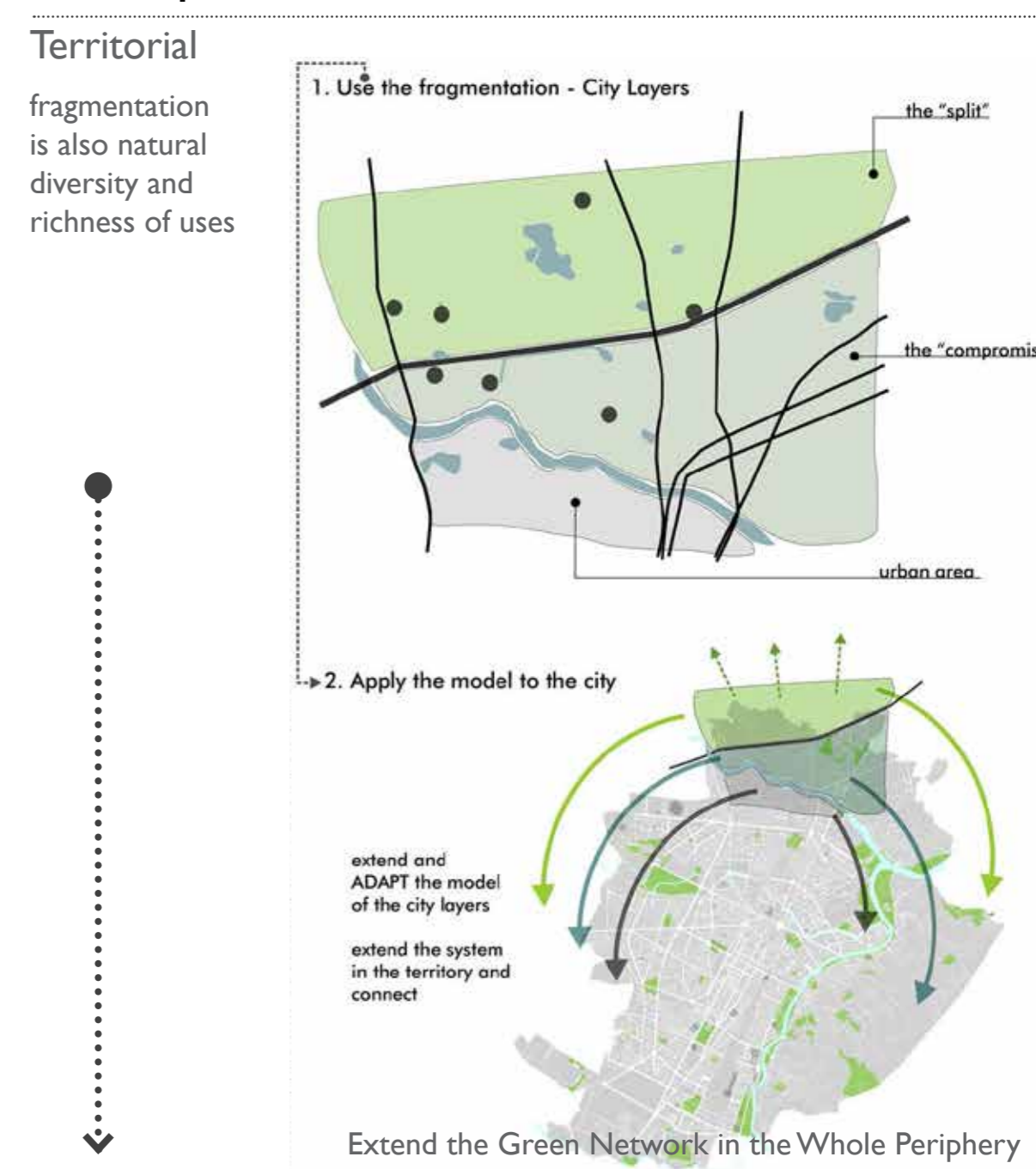
Economic Factors areas of producing and consuming



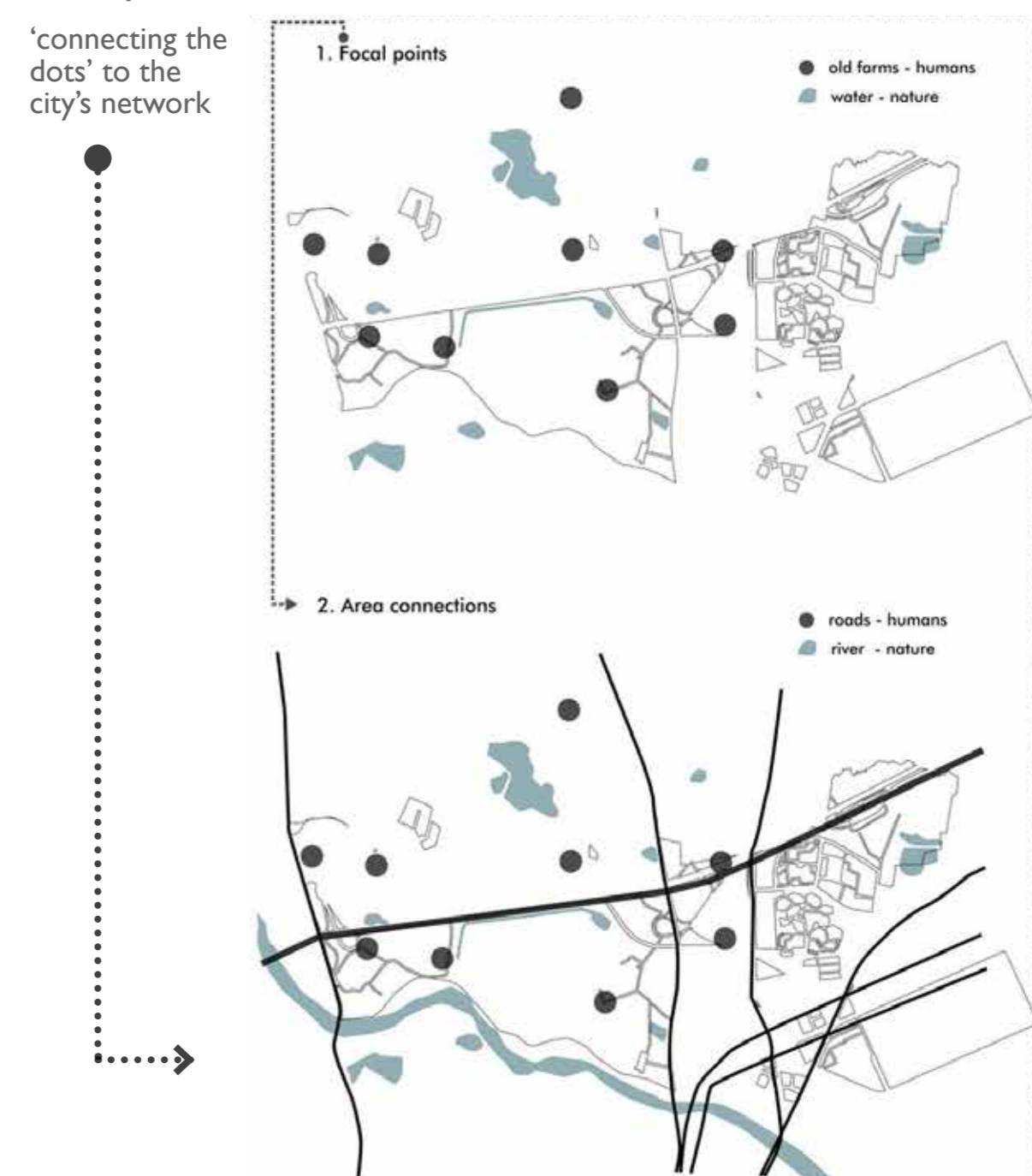
Building Structure varying building heights



Conceptual Framework Turning Limits Into Driving Forces



Locally



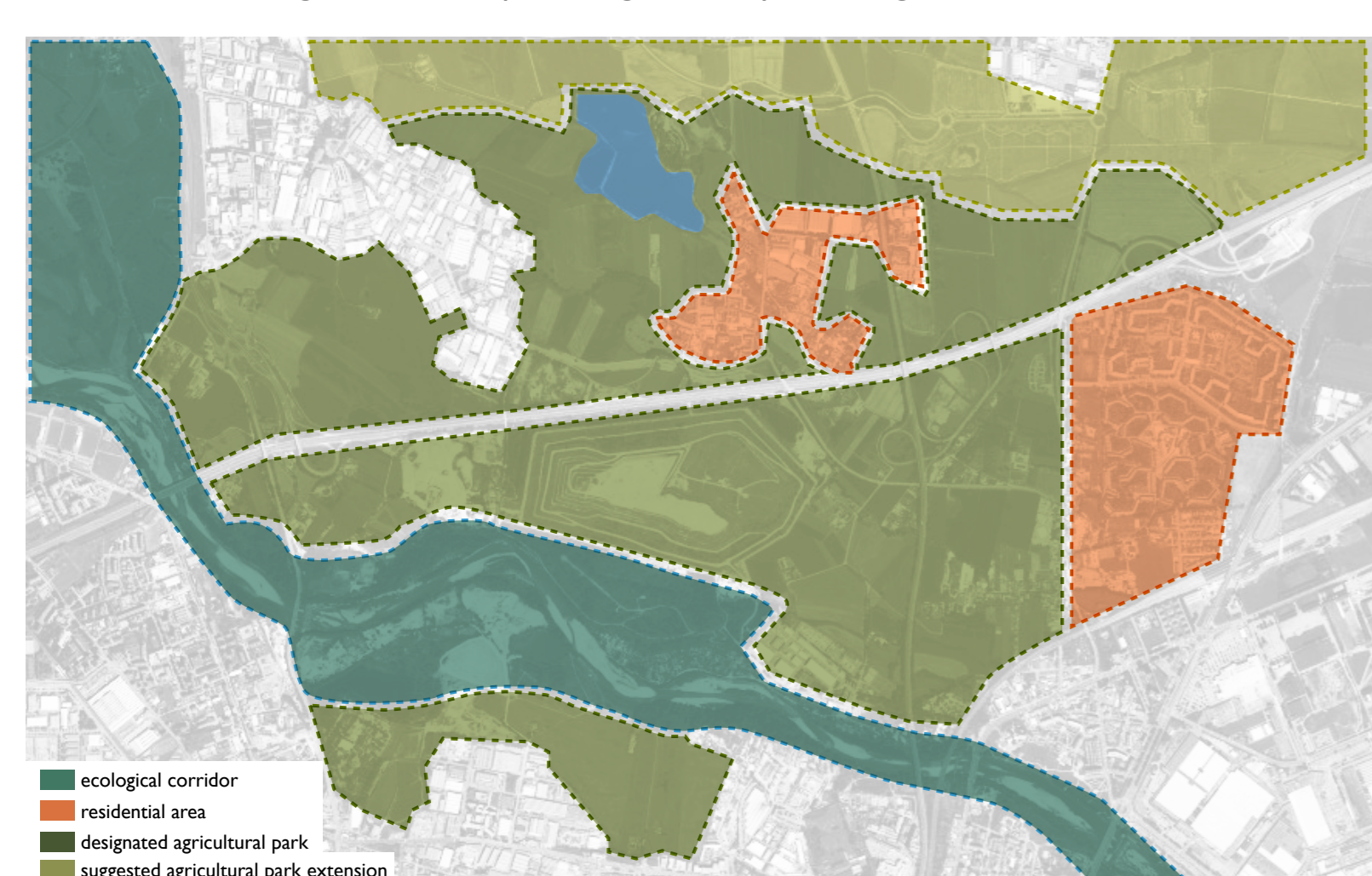
Landscape Type diverse landscapes with important determining factors



Land Ownership separation of public and private land with a restricting municipality border



Land Use large amounts of space designated for park and agricultural uses



Future Land Acquisition desired land acquisition for future uses

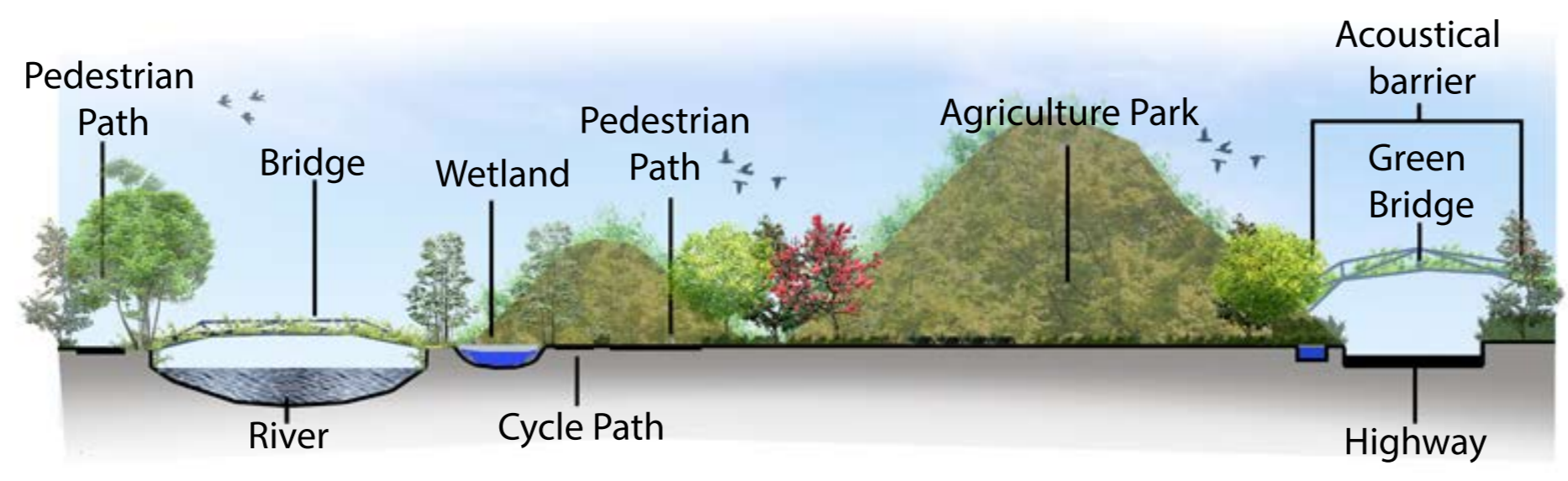
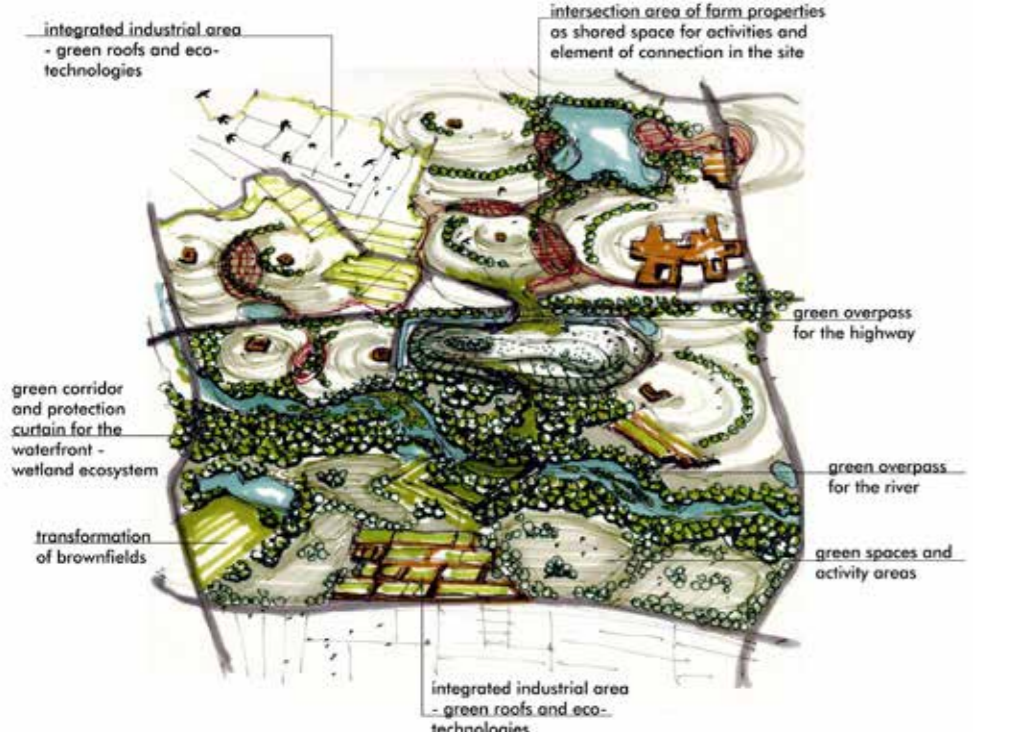


growing agriCULTURE

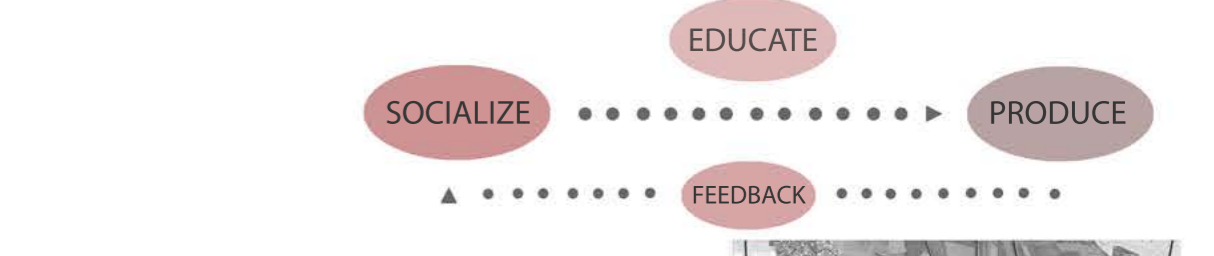
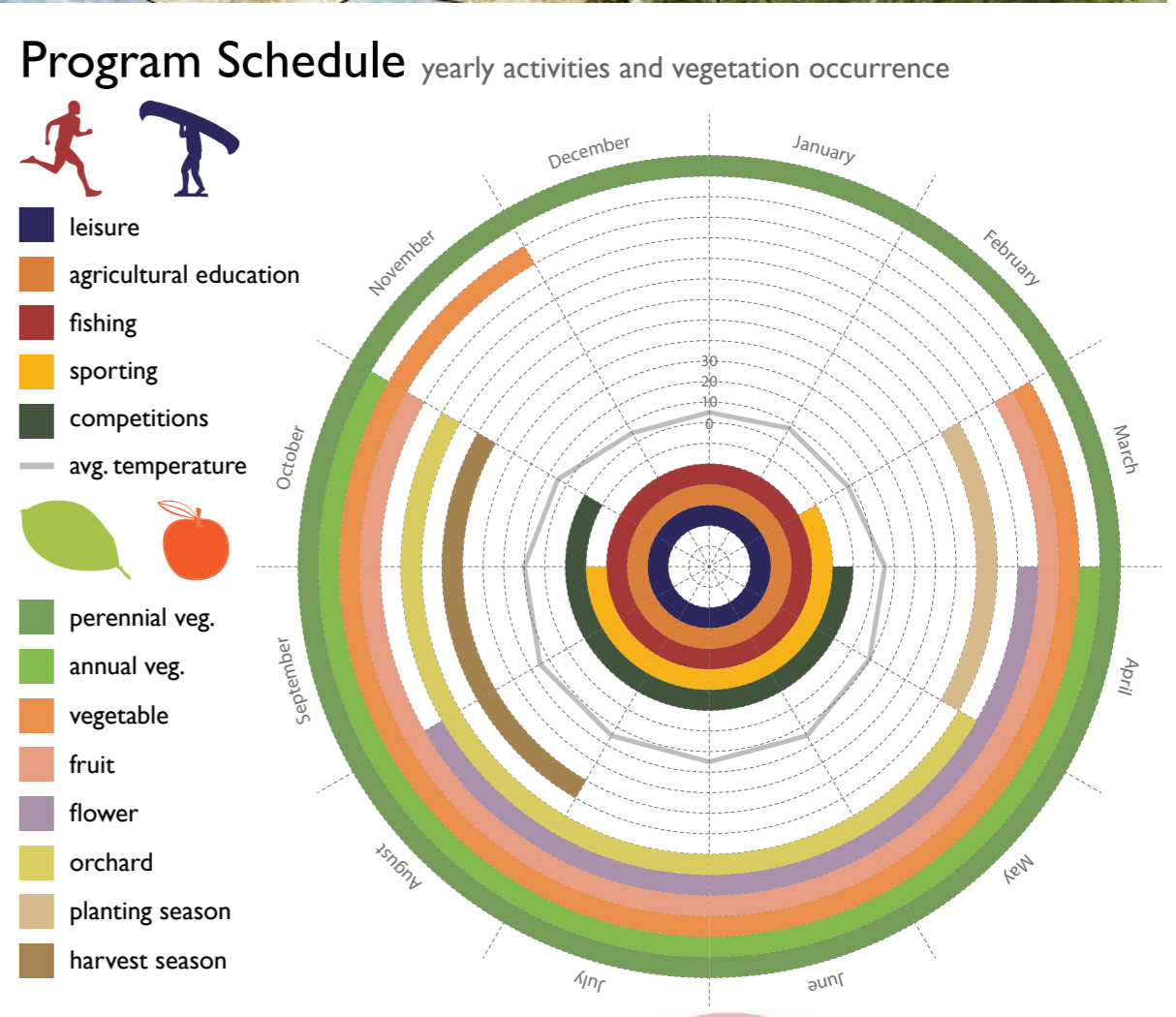
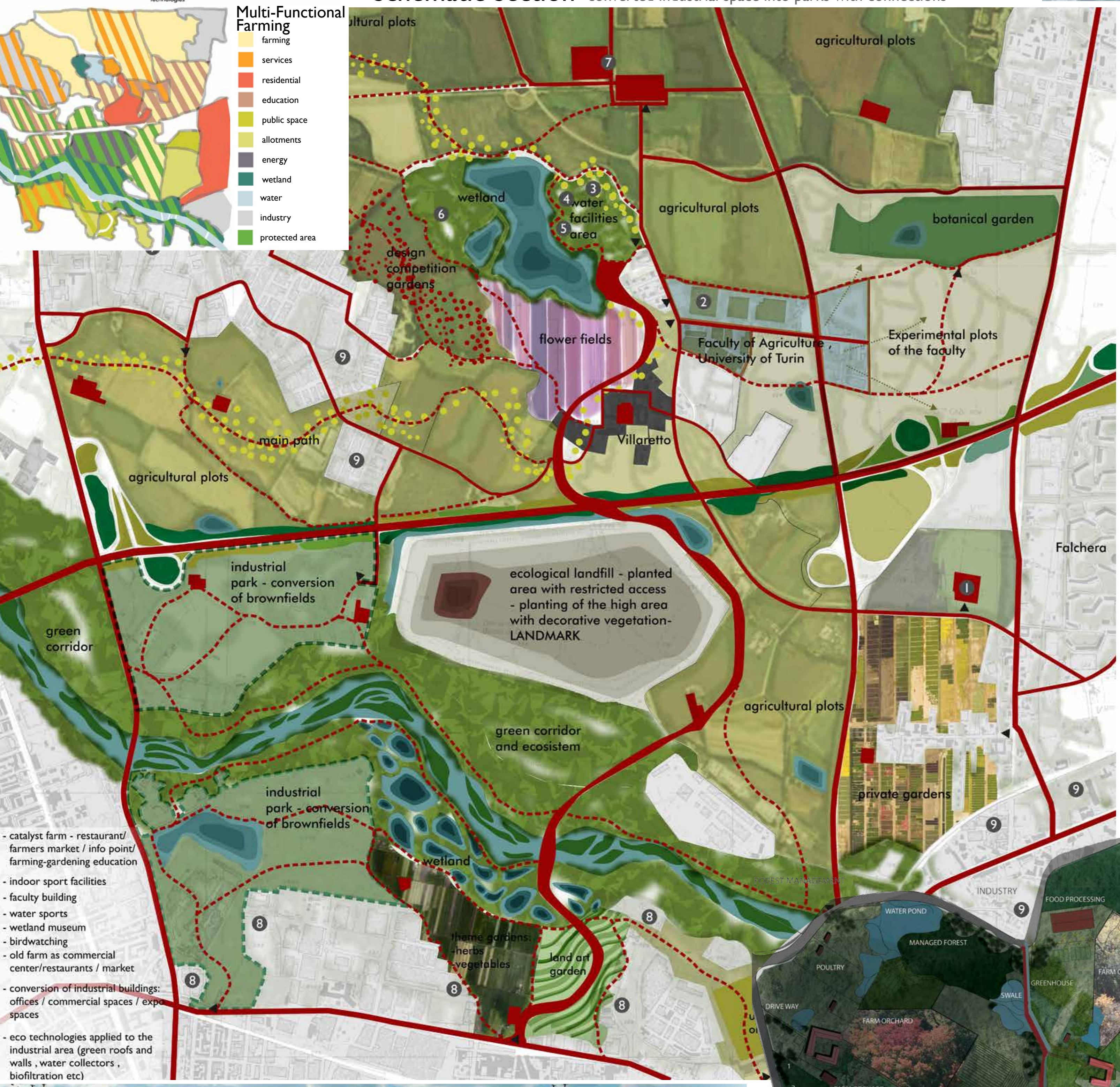
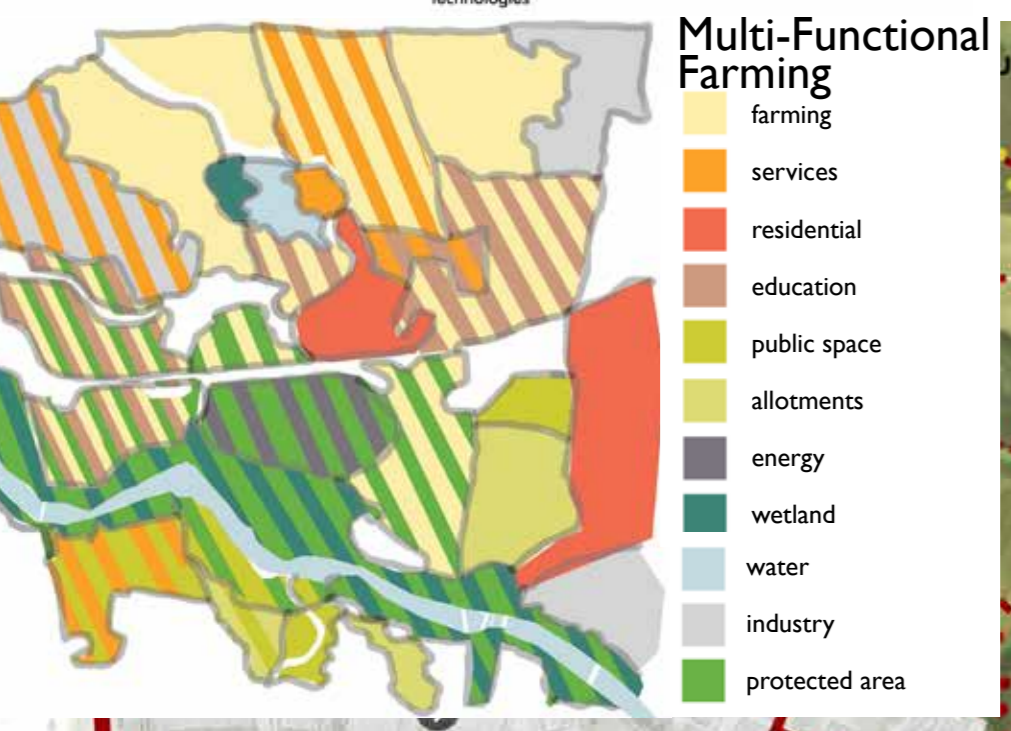
Expanding Park Boundaries



- [1] University of Torino Ag. Faculty
- [2] laboratories
- [3] Waterland Museum's entrance and sports facilities
- [4] Waterland Museum
- [5] local shop
- [6] restaurant and cafe
- [7] industrial residues integrated into public space



Schematic Section converted industrial space into parks with connections



- 1 INFRASTRUCTURE**
SOCIAL & SCIENTIFIC ENTERPRISE
INHABITANTS CONSULTATION
CAPACITY CALCULATION
UNIVERSITY SUPPORT
- 2 URBAN PARK & SERVICES**
SOCIAL & SCIENTIFIC ENTERPRISE
DESIGNING COMPETITIONS
AGRICULTURAL DEVELOPMENTS
ASSOCIATION WITH COOPERATIVES
- 3 CONNECTION WITH CITY**
INDUSTRIAL PARK CONVERSION
ECOLOGICAL PROTECTION
REMOVAL OF AMIAT
- 4 CONNECTING DOTS & EXTENSION**
HYBRID FARM MODEL
EXTENSION THROUGH NORTH
RESEARCH & FEEDBACKS



diverse experience



Farm Detail



Future Expansion



growing involvement

UPWARD Urban Project Workshop and Responsible Design

ERASMUS INTENSIVE PROGRAMME 2013

COORDINATOR: POLITECNICO DI TORINO

Team : 8 Tutors : J. Franta, F. Suchon

Students : M. Sezer, S. Cawse, U. Kuczma, L. Iodice, M. Micu

